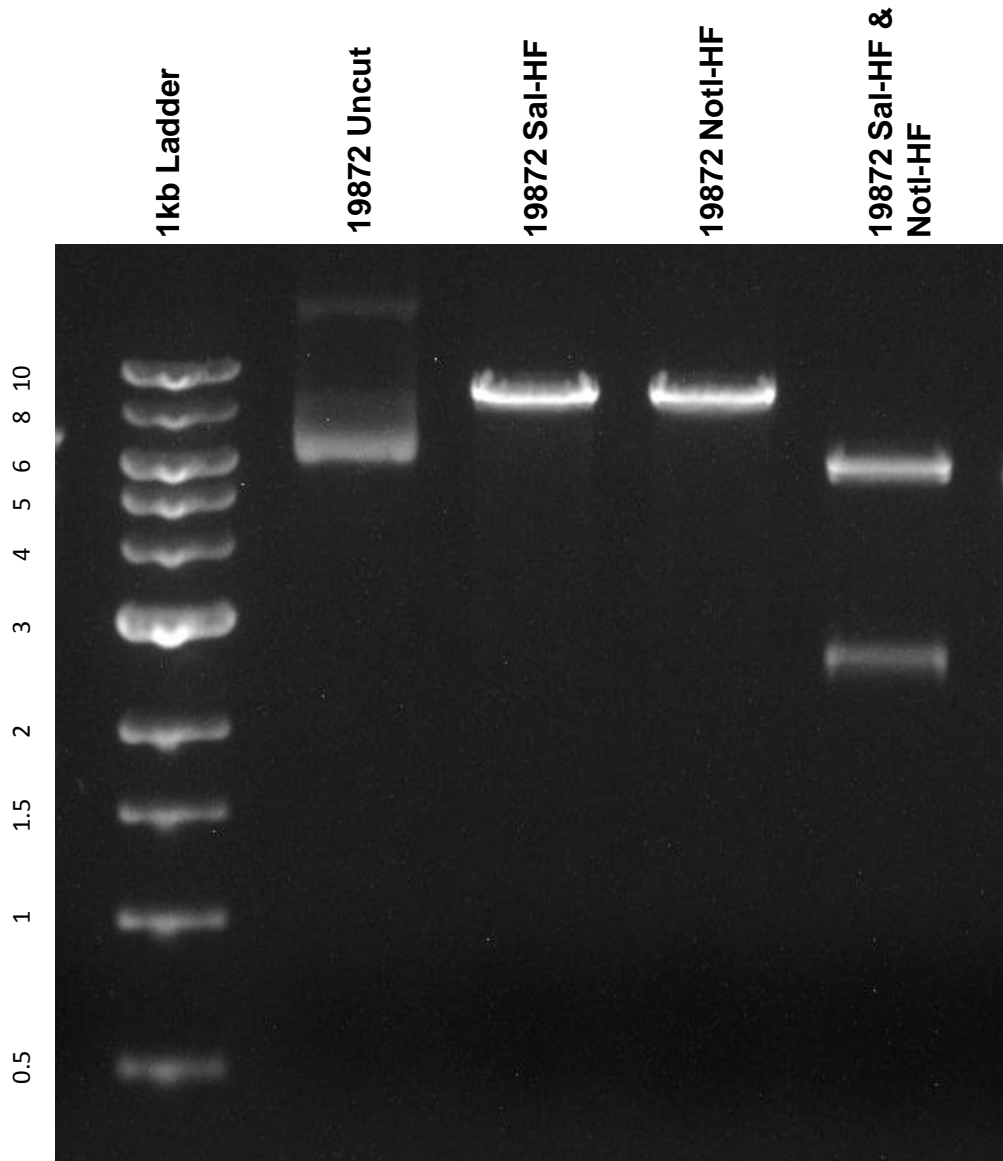


This gel depicts the NEB 1kb ladder and a digestion of the plasmid 19872 with the following enzymes: Sal-HF and NotI-HF.

Plasmid 19872: pDESTmycEIF2C2



DNA digested with Sal-HF single digest, NotI-HF single digest , Sal-HF and NotI-HF double digest for **2 hours**.  
Gel: 0.8% TAE and 4uL of ethidium bromide  
Run for 1:00 hour at 100 volts