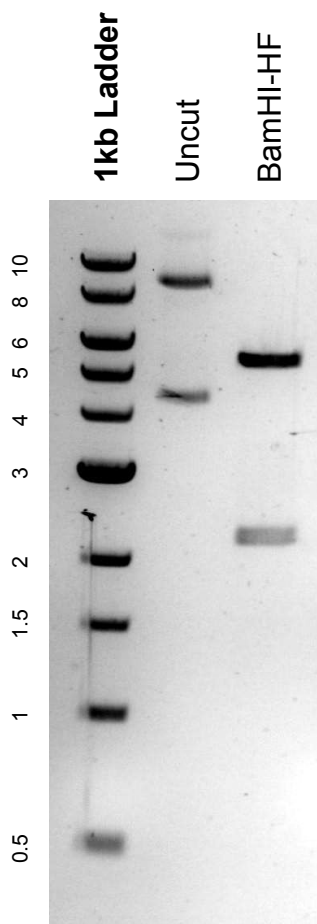


This gel depicts the NEB 1kb Ladder and a digestion of the plasmid **pcDNA3-myc3-CUL1** with the following enzymes: **BamHI-HF**

Plasmid 19896:
pcDNA3-myc3-CUL1



DNA digested with a BamHI-HF single digest for **2 hours**.
Gel: 0.8% agarose stained with 22.5 uL of SYBR Safe.
Ran for 1.25 hours at 100 volts.