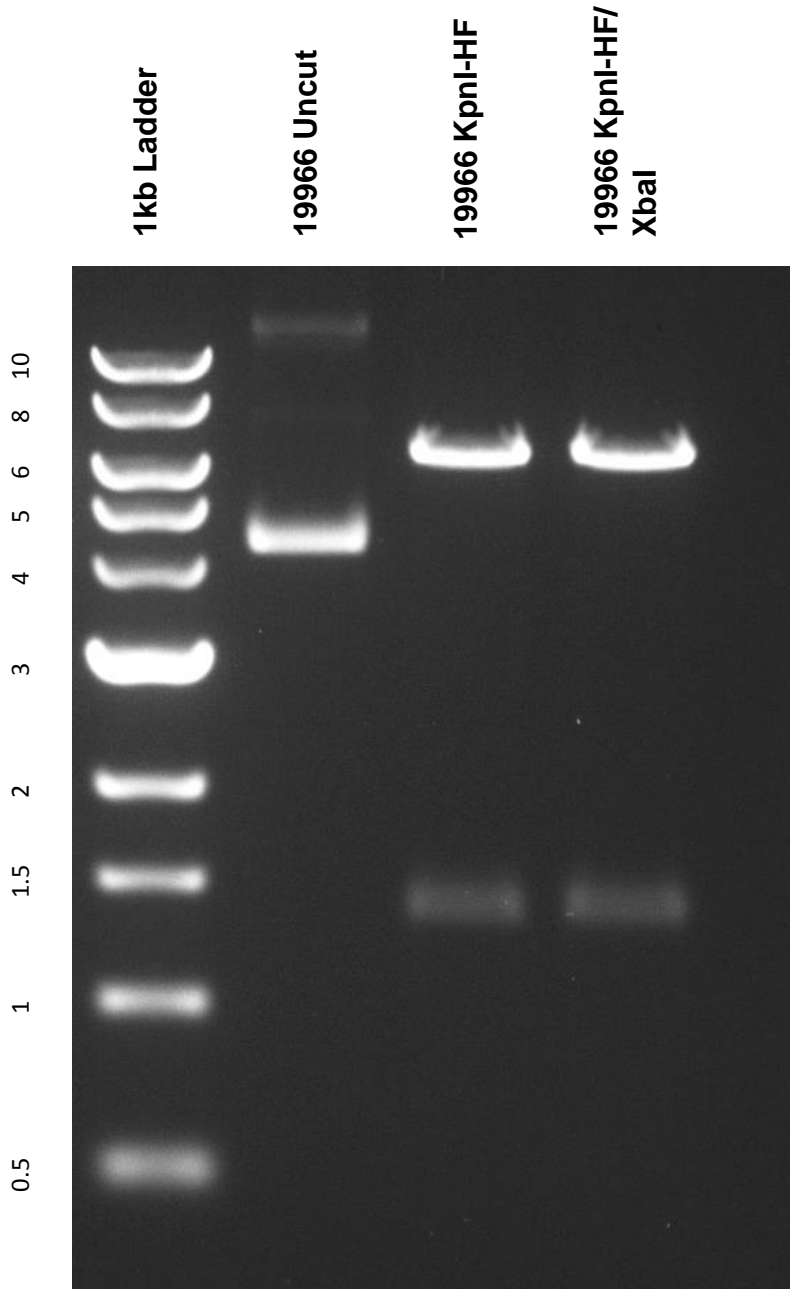


This gel depicts the NEB 1kb ladder and a digestion of the plasmid 19966 with the following enzymes: KpnI-HF and XbaI.

Plasmid 19966: pcDNA-D2s-L-Venus



DNA digested KpnI-HF and KpnI-HF/XbaI double digest for **2 hours**.
Gel: 0.8% TAE with 0.2% ethidium bromide.
Run for 2 hours at **80** volts.