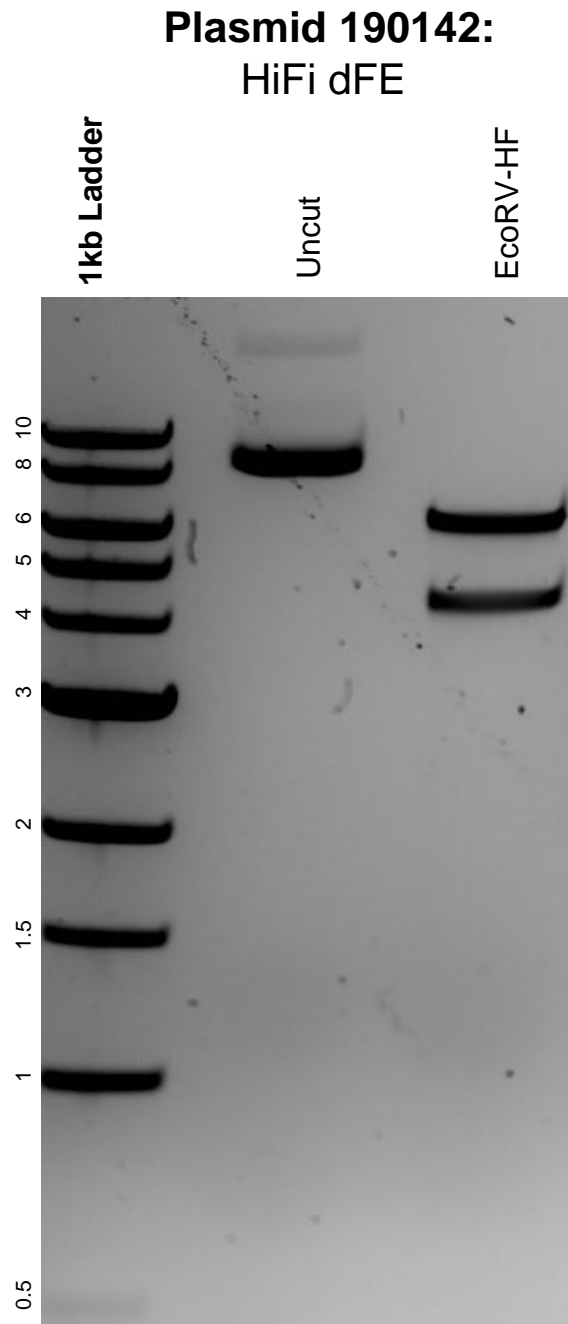


This gel depicts the NEB 1kb ladder and a digestion of the plasmid HiFi dFE with the following enzyme: EcoRV-HF.



DNA digested with an EcoRV-HF single digest for **2 hours**.
Gel: 0.8% agarose stained with 5 uL of ethidium bromide.
Ran for 1.5 hours at 100 volts.