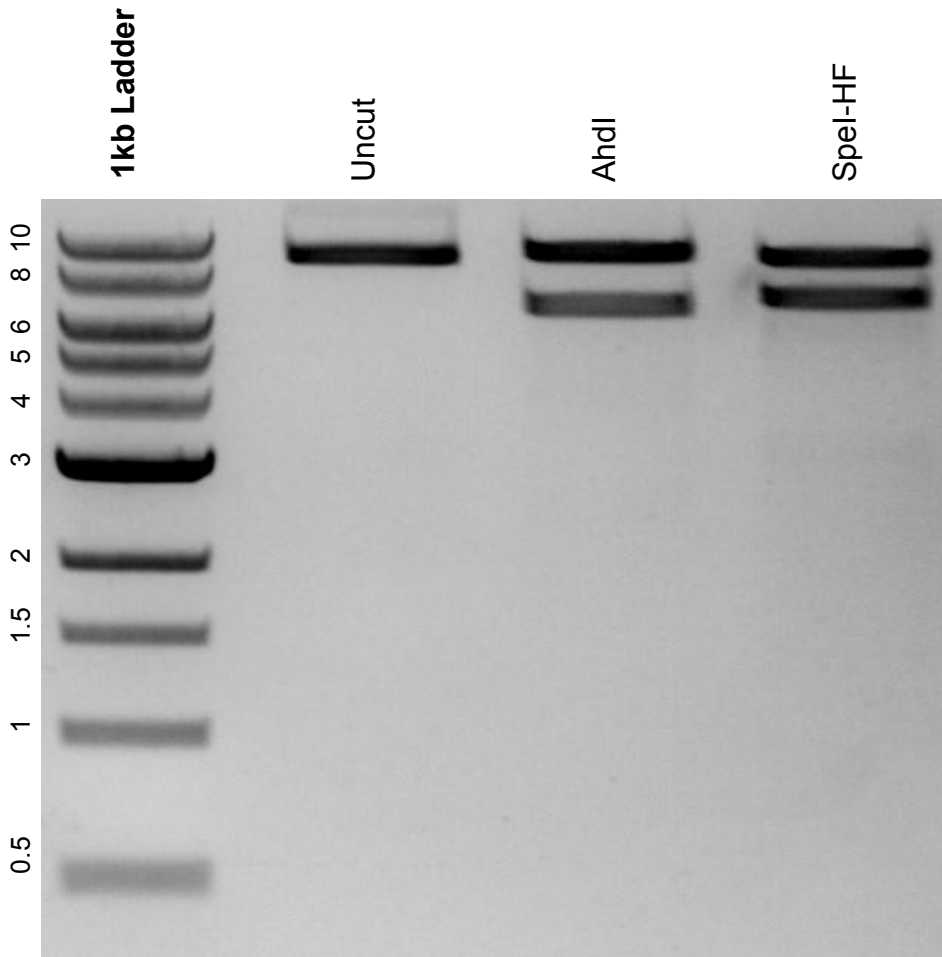


This gel depicts the NEB 1kb Ladder and a digestion of the plasmid PB-REVERBA-mScarlet-NLS-PEST with the following enzymes: AhdI, SpeI-HF

Plasmid 190658:
PB-REVERBA-mScarlet-NLS-PEST



DNA digested with AhdI and SpeI-HF single digests for **2 hours**.
Gel: 0.8% agarose stained with SYBR Safe.
Ran for 1.25 hours at 100 volts.