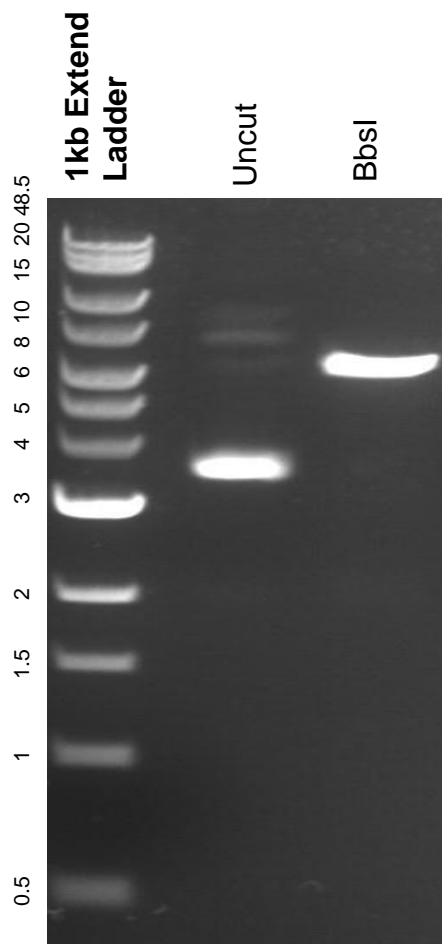


This gel depicts the NEB 1kb Ladder and a digestion of the plasmid pCAG-Rab27a-GFP with the following enzyme: BbsI

Plasmid 194985
pCAG-Rab27a-GFP



DNA digested with BbsI single digest for **2 hours**.
Gel: 0.8% agarose stained with 5 uL of ethidium bromide.
Ran for 1.5 hours at 100 volts.