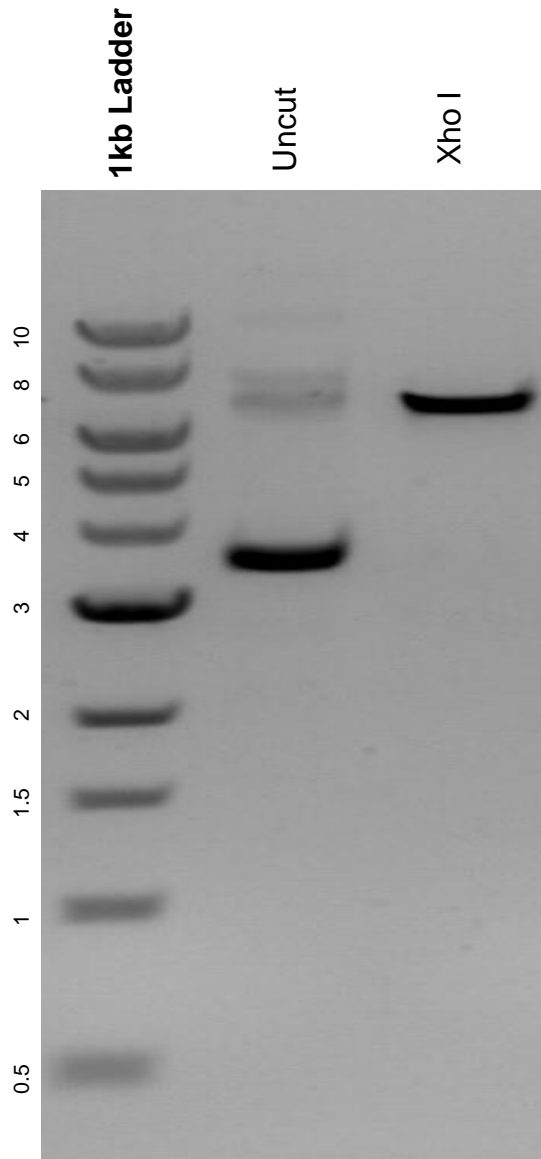


This gel depicts the NEB 1kb Ladder and a digestion of the plasmid sfCherry11-WT-PTPN22 with the following enzyme: Xho I

Plasmid 195384
sfCherry11-WT-PTPN22



DNA digested with Xho I single digest for **2 hours**.
Gel: 0.8% agarose stained with 5 uL of ethidium bromide.
Ran for 1.5 hours at 100 volts.