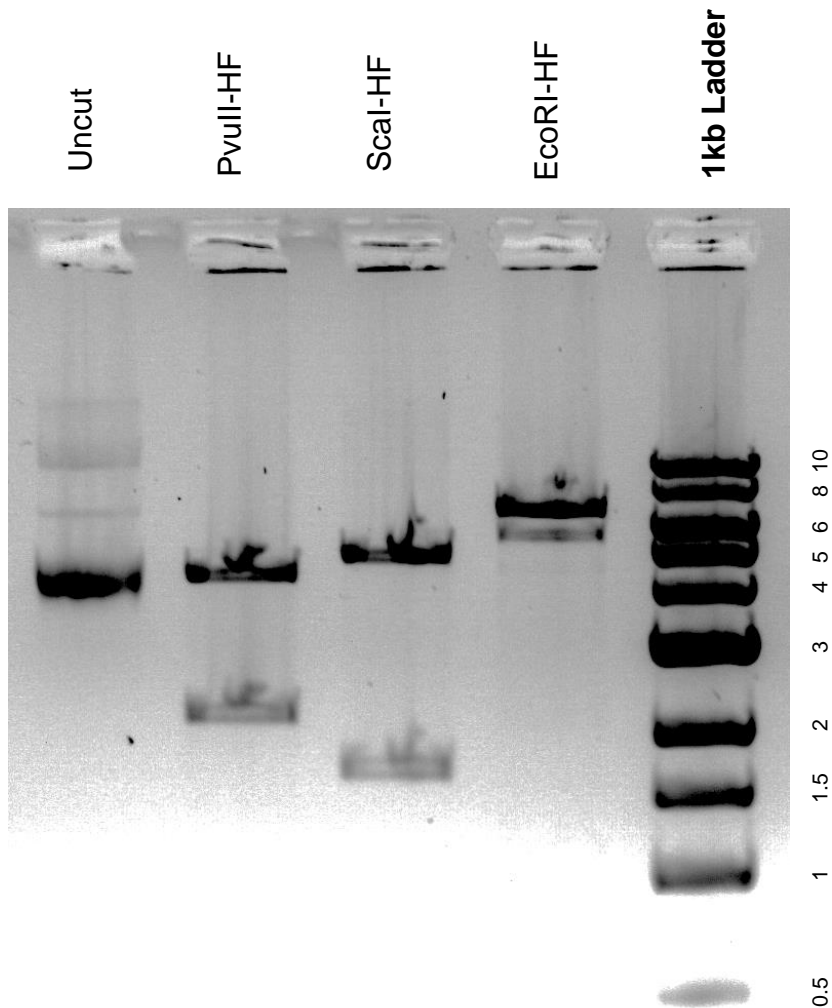


This gel depicts the NEB 1kb ladder and a digestion of the plasmid pPM28 (eroGFP CEN/ARS URA3) with the following enzymes: PvuII-HF, Scal-HF, and EcoRI-HF.

Plasmid 20131:
pPM28 (eroGFP CEN/ARS URA3)



DNA digested with PvuII-HF, Scal-HF, and EcoRI-HF single digests for **2 hours**.
Gel: 0.8% agarose stained with 5 uL of ethidium bromide.
Ran for 2 hours at 60 volts.