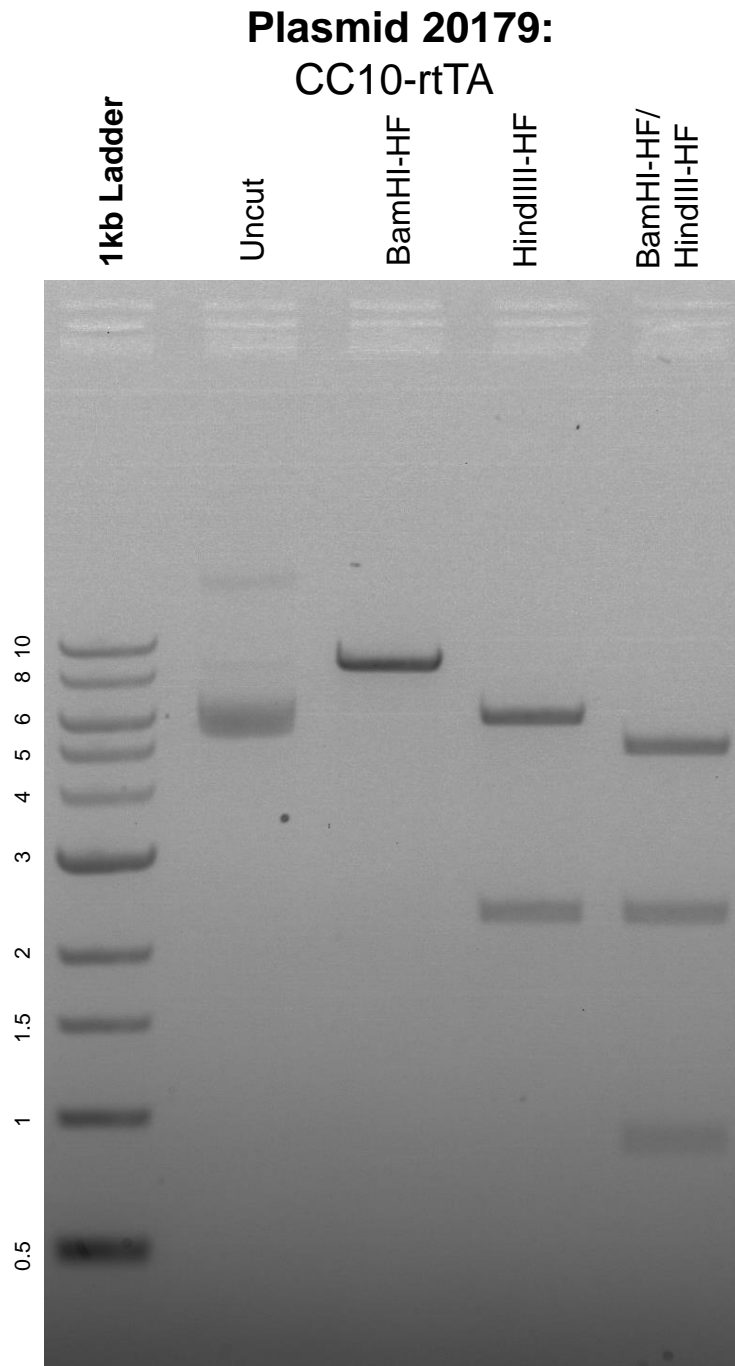


This gel depicts the NEB 1kb ladder and a digestion of the plasmid CC10-rtTA with the following enzymes: BamHI-HF and HindIII-HF.



DNA digested with BamHI-HF and HindIII-HF single digests and BamHI-HF/HindIII-HF double digest for **2 hours**.

Gel: 0.8% agarose stained with 5 uL of ethidium bromide.

Ran for 2 hours at 80 volts.