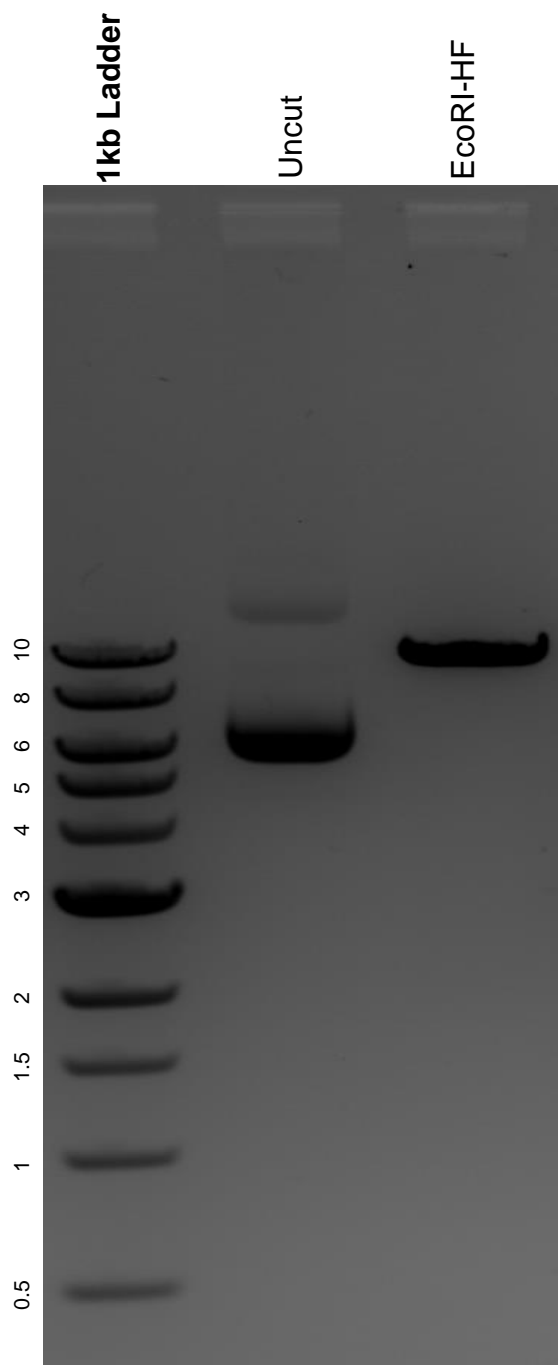


This gel depicts the NEB 1kb ladder and a digestion of the plasmid Thy1 promoter construct with the following enzyme: EcoRI-HF.

Plasmid 20736:
Thy1 promoter construct



DNA digested with EcoRI-HF single digest for **2 hours**.
Gel: 0.8% agarose stained with 5 uL of ethidium bromide.
Ran for 1.5 hours at 100 volts.