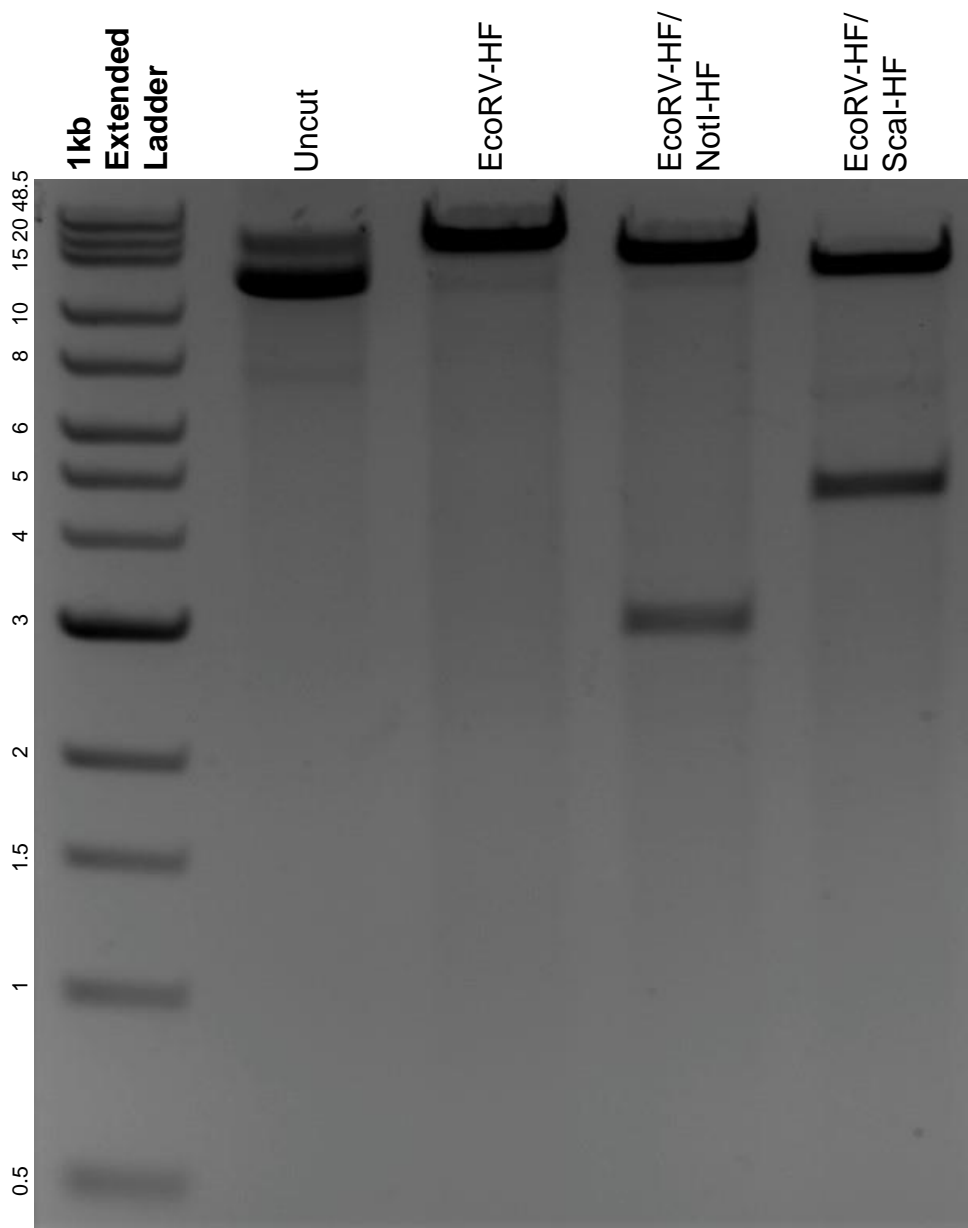


This gel depicts the NEB 1kb extended ladder and a digestion of the plasmid pEP4 E02S ET2K with the following enzymes: EcoRV-HF, NotI-HF, and Scal-HF.

**Plasmid 20927:**  
**pEP4 E02S ET2K**



DNA digested with EcoRV-HF single digest and EcoRV-HF/ NotI-HF and EcoRV-HF/ Scal-HF double digests for **2 hours**.

Gel: 0.8% agarose stained with 6 uL of ethidium bromide.

Ran for 1.5 hours at 100 volts.