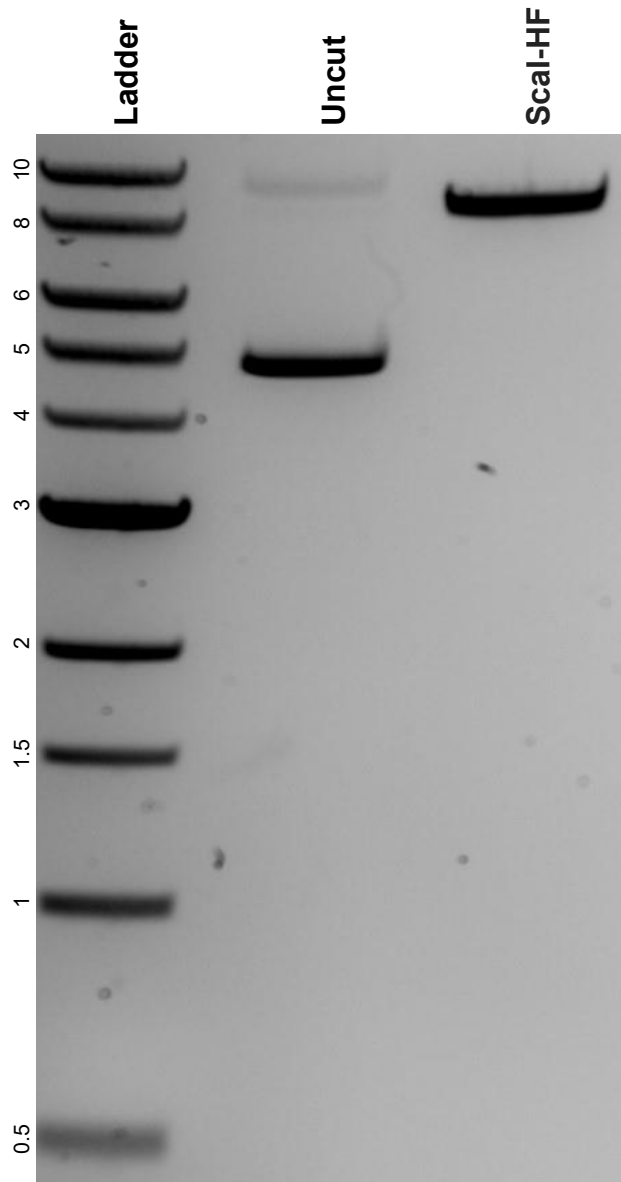


This gel depicts the NEB 1kb ladder and a digestion of the plasmid PP\_071\_pAAV\_CAG\_DIO-LR-Voltron2-P2A-LR-CheRiff-TS-eYFP-ER2 with the following enzyme(s): Scal-HF.

**Plasmid 203229:**

PP\_071\_pAAV\_CAG\_DIO-LR-Voltron2-  
P2A-LR-CheRiff-TS-eYFP-ER2



DNA was digested for 1 hour and run on a 0.8% agarose gel stained with SYBR Safe for 1 hour and 15 minutes (100 volts).