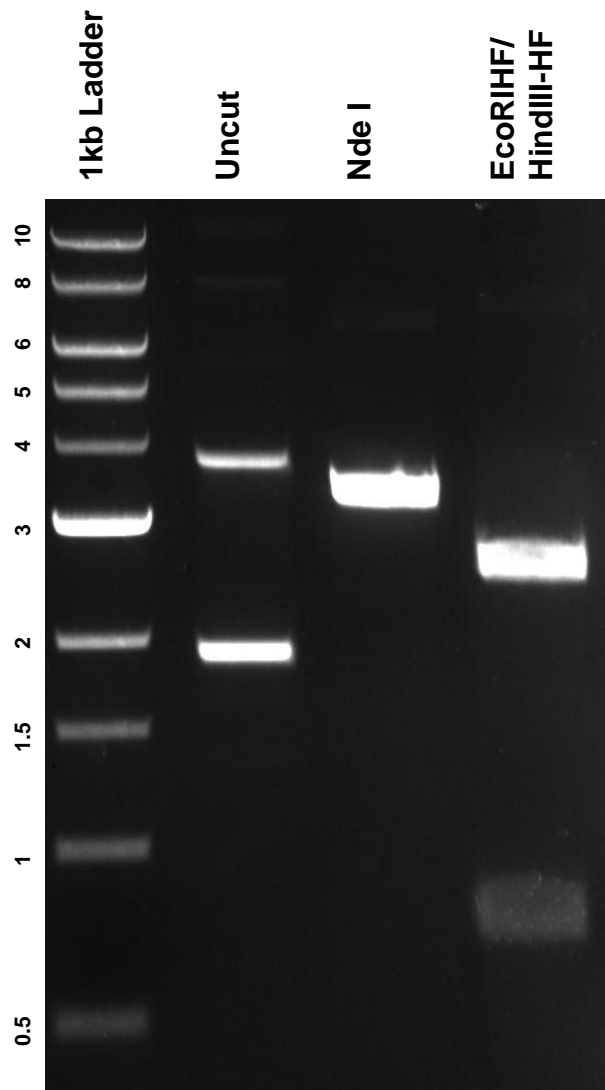


This gel depicts the NEB 1kb Ladder and a digestion of the plasmid **pGEM4Z-T7-5'UTR-EGFP-3'UTR-A64** with the following enzyme(s): **Nde I** , **EcoRI-HF**, and **HindIII-HF**

Plasmid 203348
pGEM4Z-T7-5'UTR-EGFP-3'UTR-A64



DNA digested with **Nde I** single digest and **EcoRI-HF/HindIII-HF** double digest for **1 hours**.
Gel: **0.8%** agarose stained with **6 uL** of SYBR Safe.
Ran for **1.5** hours at **100** volts.