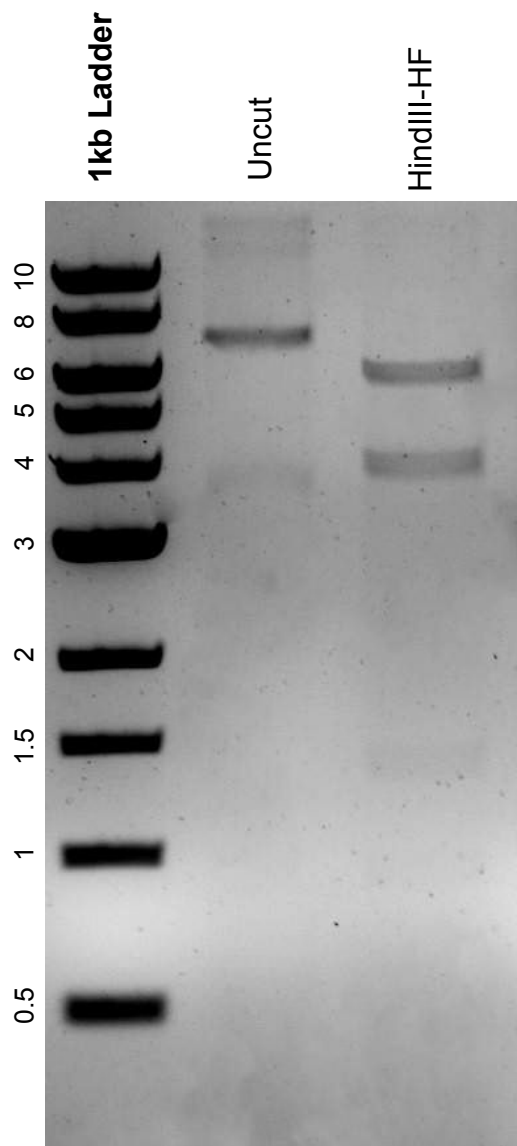


This gel depicts the NEB 1kb Ladder and a digestion of the plasmid pC1.509 with the following enzymes: HindIII-HF

Plasmid 203955:
pC1.509



DNA digested with HindIII-HF single digest for **2 hours**.
Gel: 0.8% agarose stained with SYBR Safe.
Ran for 1.25 hours at 100 volts.