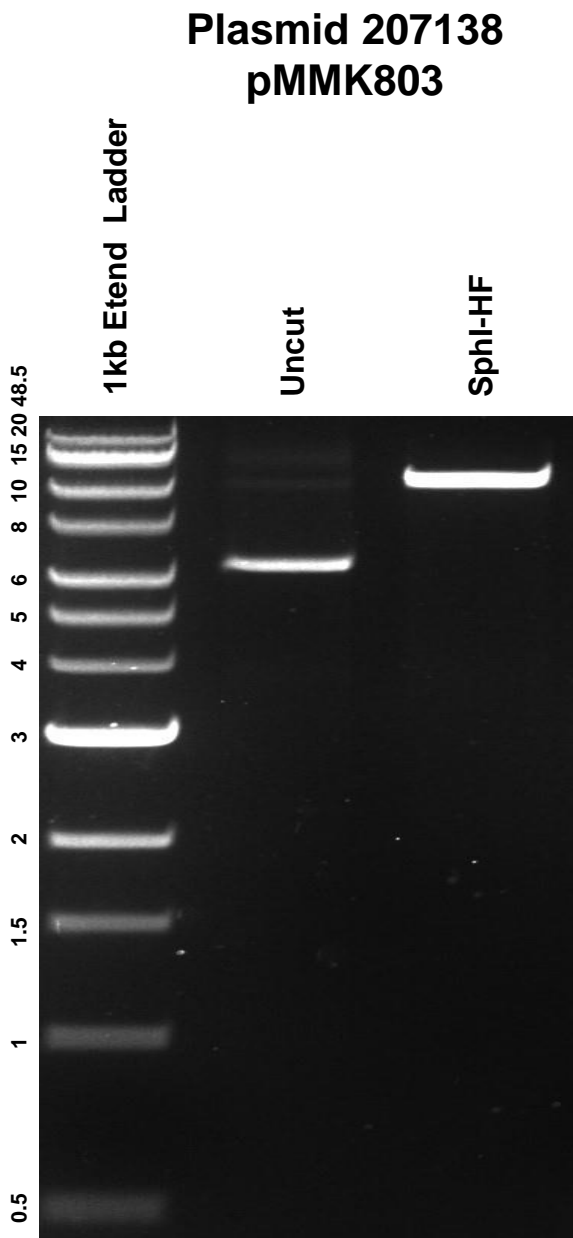


This gel depicts the NEB 1kb Extend Ladder and a digestion of the plasmid pMMK803 with the following enzyme(s): SphI-HF



DNA digested with **SphI-HF** single digest for **1 hours**.  
Gel: **0.8%** agarose stained with **6 uL** of SYBR Safe.  
Ran for **1.5** hours at **100** volts.