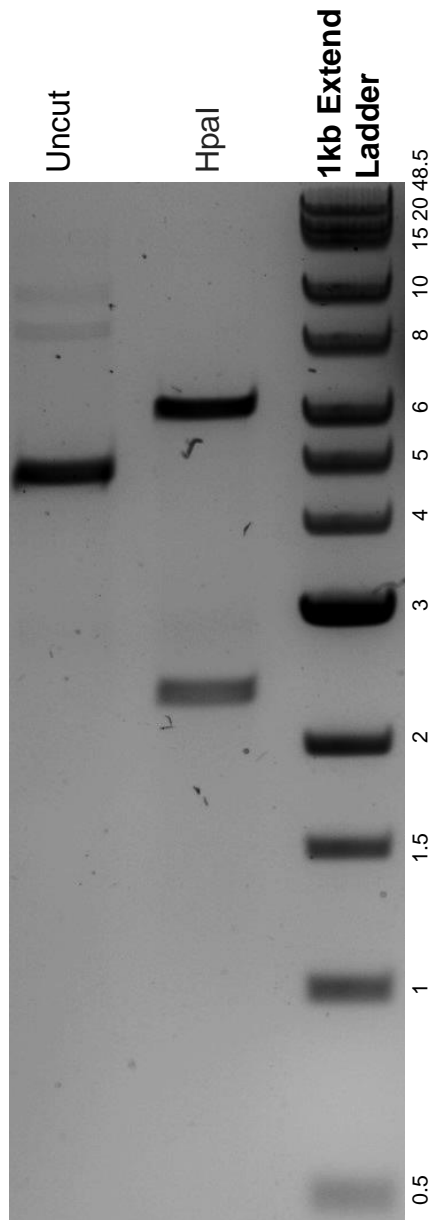


This gel depicts the NEB 1kb extend ladder and a digestion of the plasmid pETDuet1_CoiC_CoiSA with the following enzyme(s): HpaI.

Plasmid 208762:
pETDuet1_CoiC_CoiSA



DNA digested with an HpaI single digest for **2 hours**.
Gel: 0.8% agarose stained with 5 uL of SYBR Safe.
Ran for 1.5 hours at 100 volts.