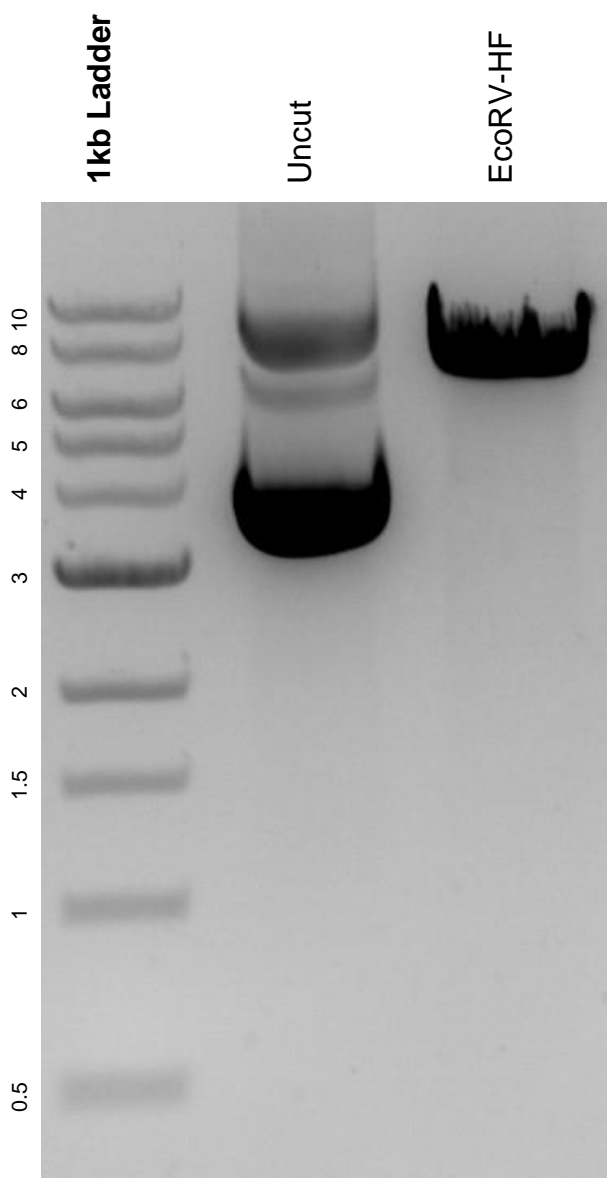


This gel depicts the NEB 1kb ladder and a digestion of the plasmid pmRFP_a_tubulin_IRES_puro2b with the following enzymes:
EcoRV-HF

Plasmid 21041:
pmRFP_a_tubulin_IRES_puro2b



DNA digested with EcoRV-HF single digest for **2 hours**.
Gel: 0.8% agarose stained with 5 uL of ethidium bromide.
Ran for 1.5 hours at 100 volts.