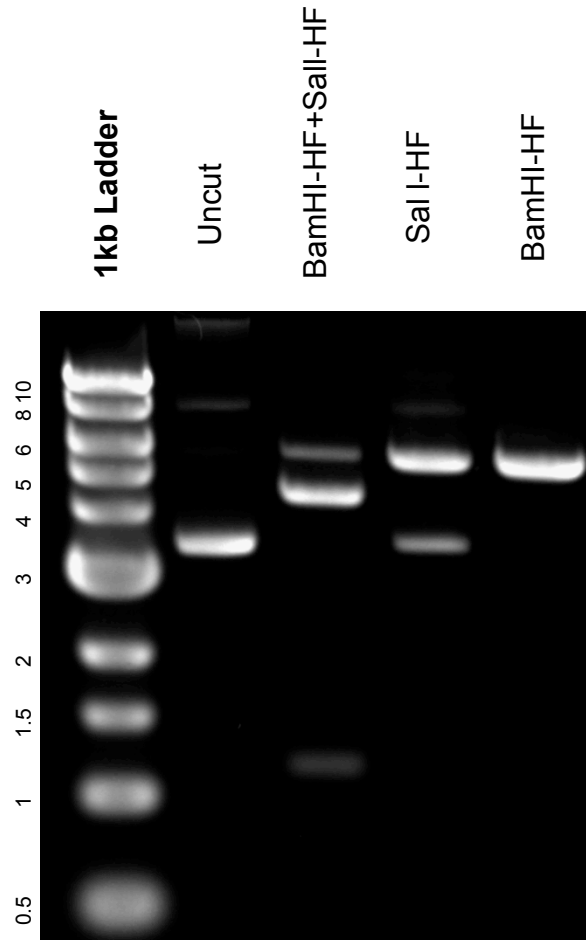


This gel depicts the NEB 1kb ladder and a digestion of the plasmid 21142 with the following enzymes: BamHI-HF, Sall-HF, BamHI +Sall-HF

### Plasmid 21142 pCMV-Caspase1-flag



DNA digested with BamHI-HF single digest, Sall-HF single digest, BamHI-HF+Sall-HF double digest for **2.0 hours**

Gel: 0.8% TAE stained with 100 ml 1X TAE and 5uL of ethidium bromide

Ran for 2.5 hours at **47 volts**