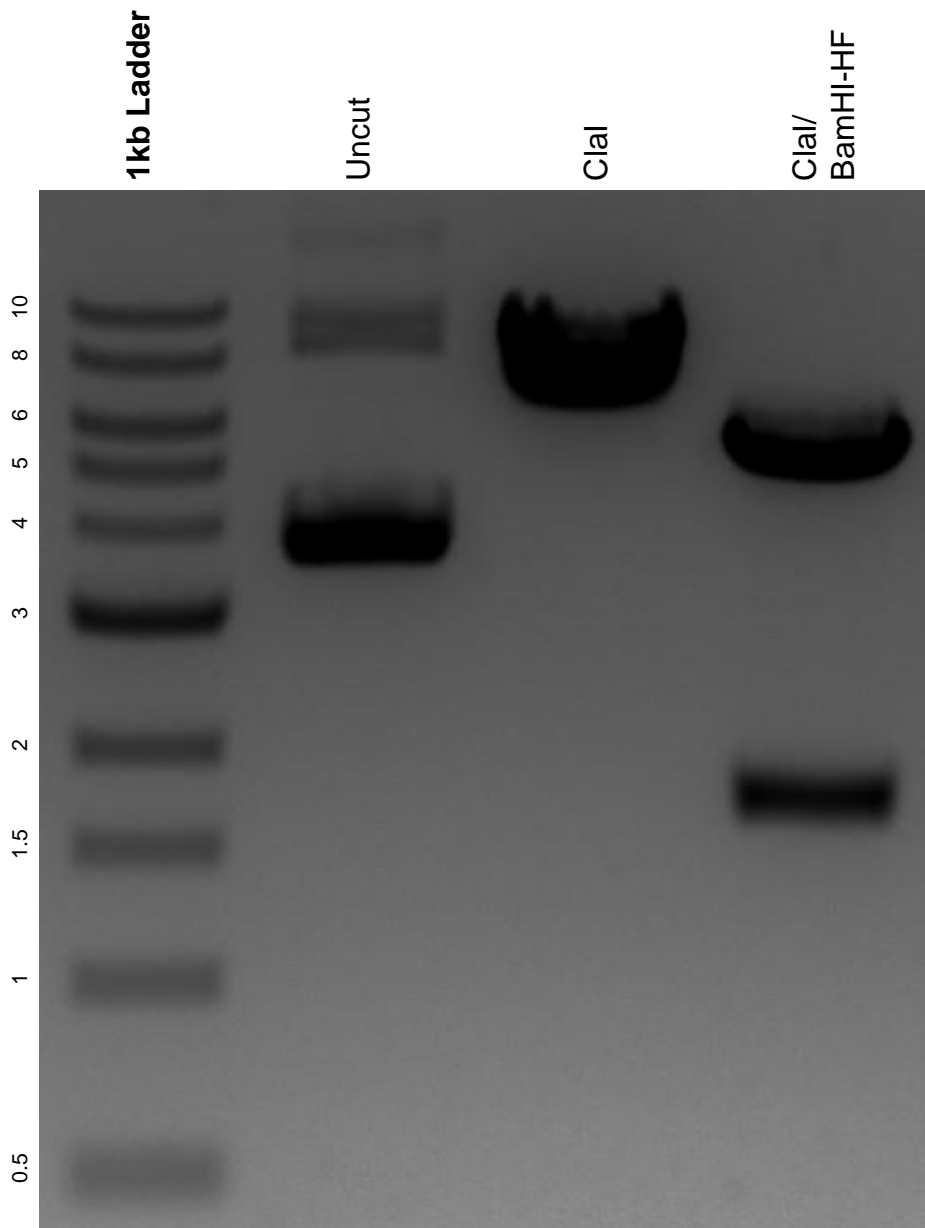


This gel depicts the NEB 1kb ladder and a digestion of the plasmid PL-SIN-EOS-S(4+)-EGFP with the following enzymes: Clal and BamHI-HF.

Plasmid 21317:
PL-SIN-EOS-S(4+)-EGFP



DNA digested with Clal single digest and Clal/ BamHI-HF double digest for **2 hours**.
Gel: 0.8% agarose stained with 6 uL of ethidium bromide.
Ran for 1.5 hours at 100 volts.