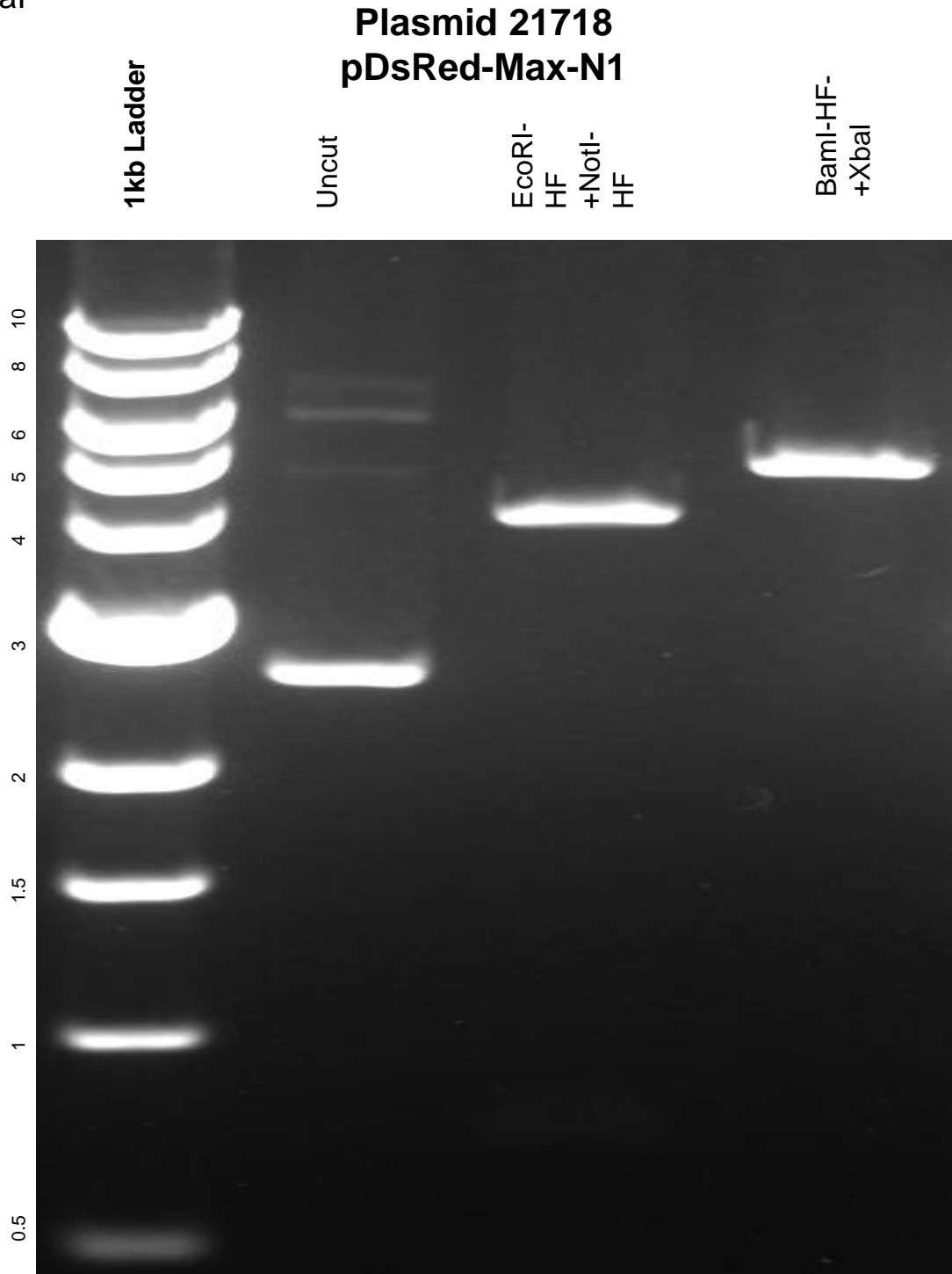


This gel depicts the NEB 1kb ladder and a digestion of the plasmid 21718 with the following enzymes: EcoRI-HF, NotI-HF, BamHI-HF, XbaI



DNA digested with EcoRI-HF+NotI-HF, and BamHI-HF+XbaI double digest for **2 hours**
Gel: 0.8% TAE pre-stained with 4 uL of ethidium bromide
Ran for 4 hours at **47** volts