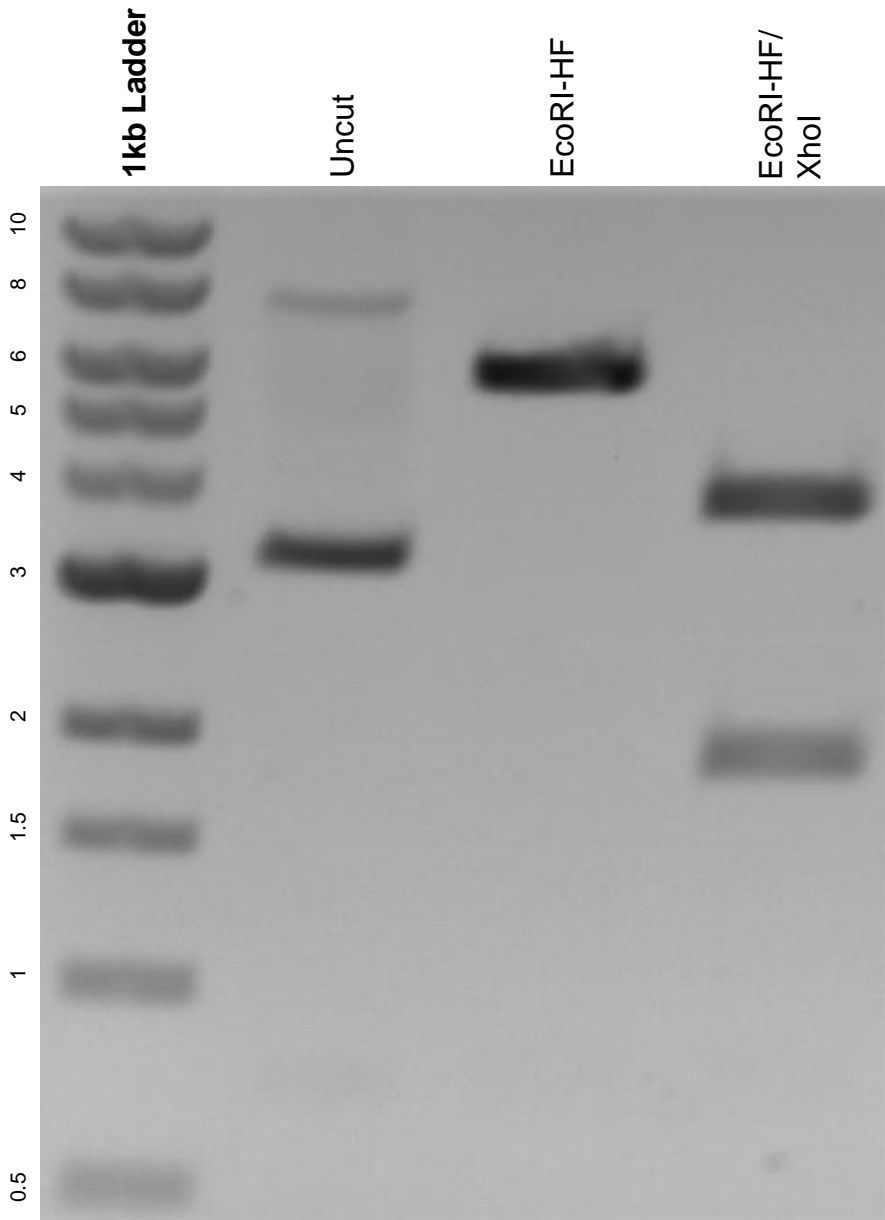


This gel depicts the NEB 1kb ladder and a digestion of the plasmid SV40 1: pBSSVD2005 with the following enzymes: EcoRI-HF and XhoI.

Plasmid 21826:
SV40 1: pBSSVD2005



DNA digested with EcoRI-HF single digest and EcoRI-HF/ XhoI double digest for **2 hours**.

Gel: 0.8% agarose stained with 6 uL of ethidium bromide.

Ran for 1.5 hours at 100 volts.