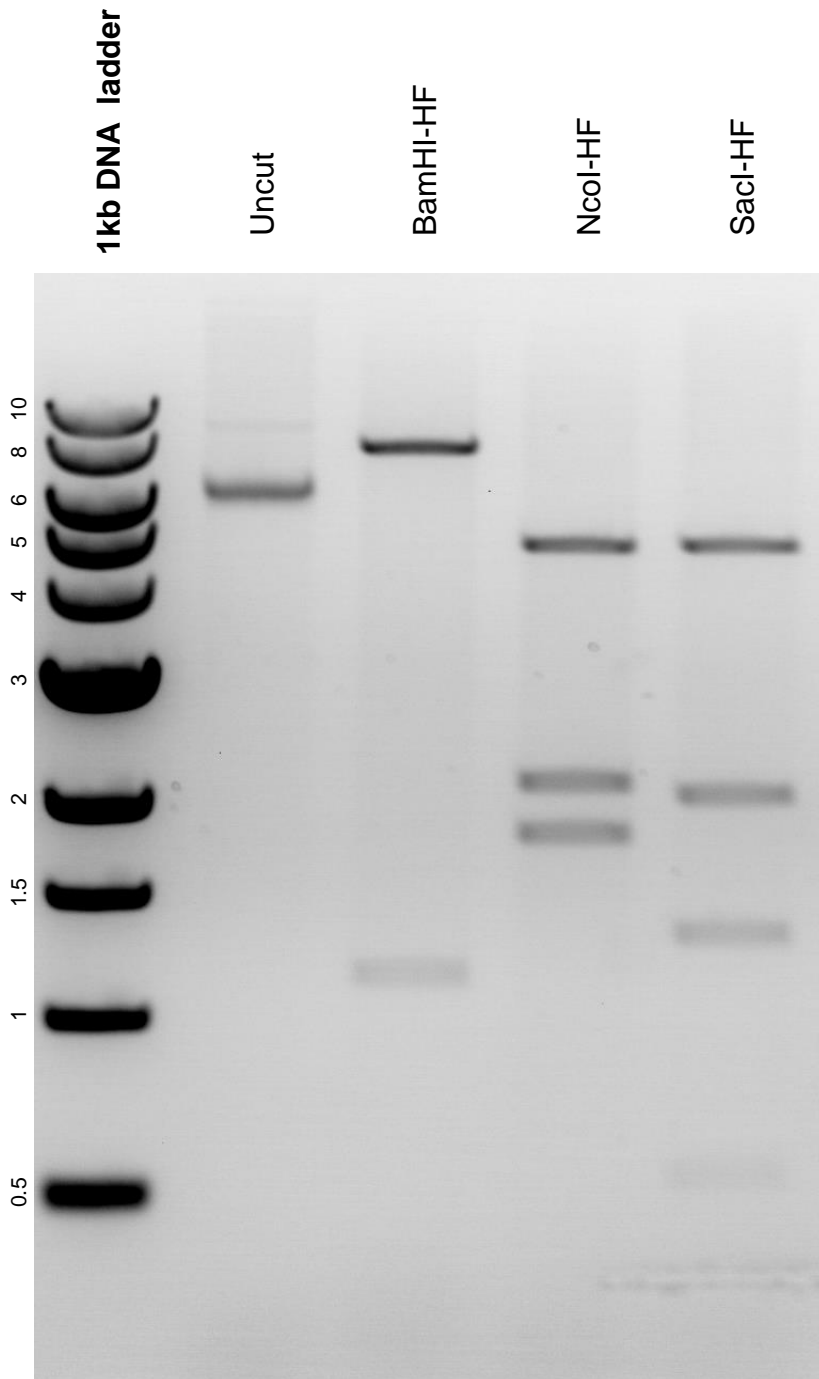


This gel depicts the NEB 1kb DNA ladder and a digestion of plasmid #21911 with the enzymes BamHI-HF, NcoI-HF, and SacI-HF

Plasmid #: 21911



DNA digested with BamHI-HF single digest, NcoI-HF single digest, and SacI-HF single digest for **2.5 hours**. Gel: 0.8% agarose stained with 8 uL of ethidium bromide. Ran for 2.5 hours at 80 volts.