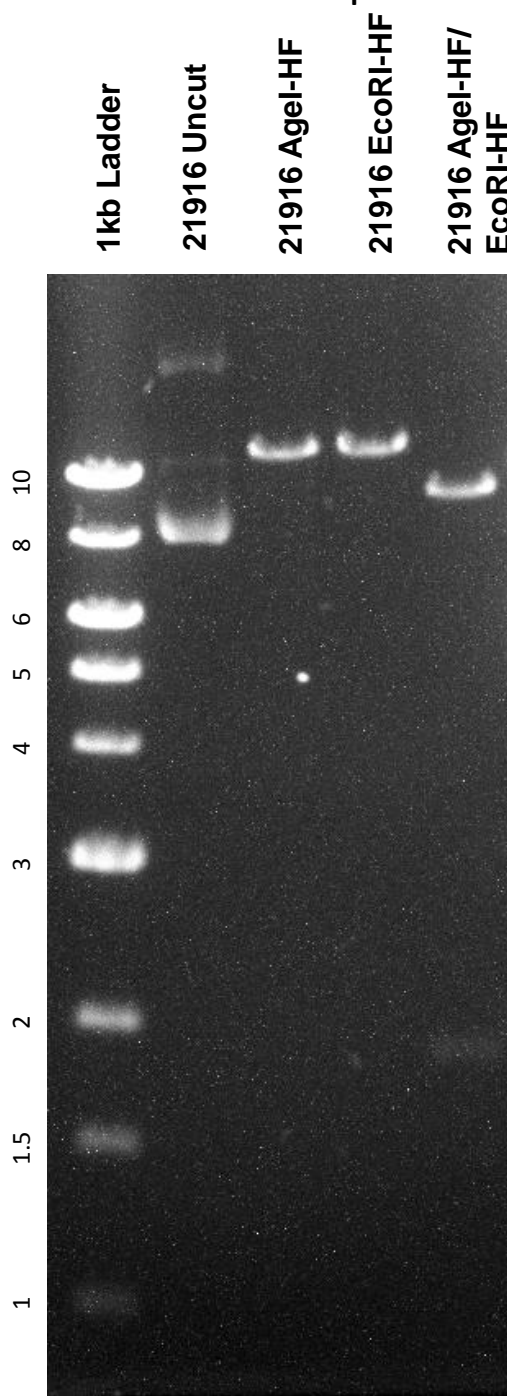


This gel depicts the NEB 1kb ladder and a digestion of plasmid 21916 with the following enzymes: EcoRI-HF and AgeI-HF.

Plasmid 21916: Tet-pLKO-neo



DNA digested with AgeI-HF, EcoRI-HF, and AgeI-HF/EcoRI-HF double digest for **2 hours**.

Gel: 0.8% TAE with 0.2% ethidium bromide.

Run for 2 hours at **100** volts.