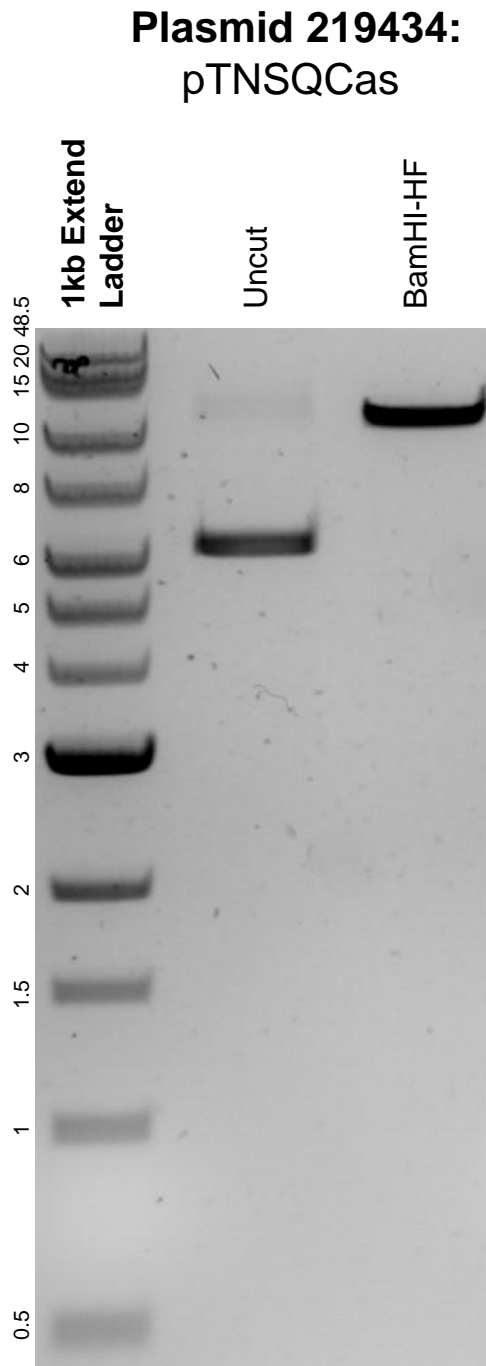


This gel depicts the NEB 1kb extend ladder and a digestion of the plasmid pTNSQCas with the following enzyme(s): BamHI-HF.



DNA digested with a BamHI-HF single digest for **2 hours**.
Gel: 0.8% agarose stained with 5 uL of SYBR Safe.
Ran for 1.5 hours at 100 volts.