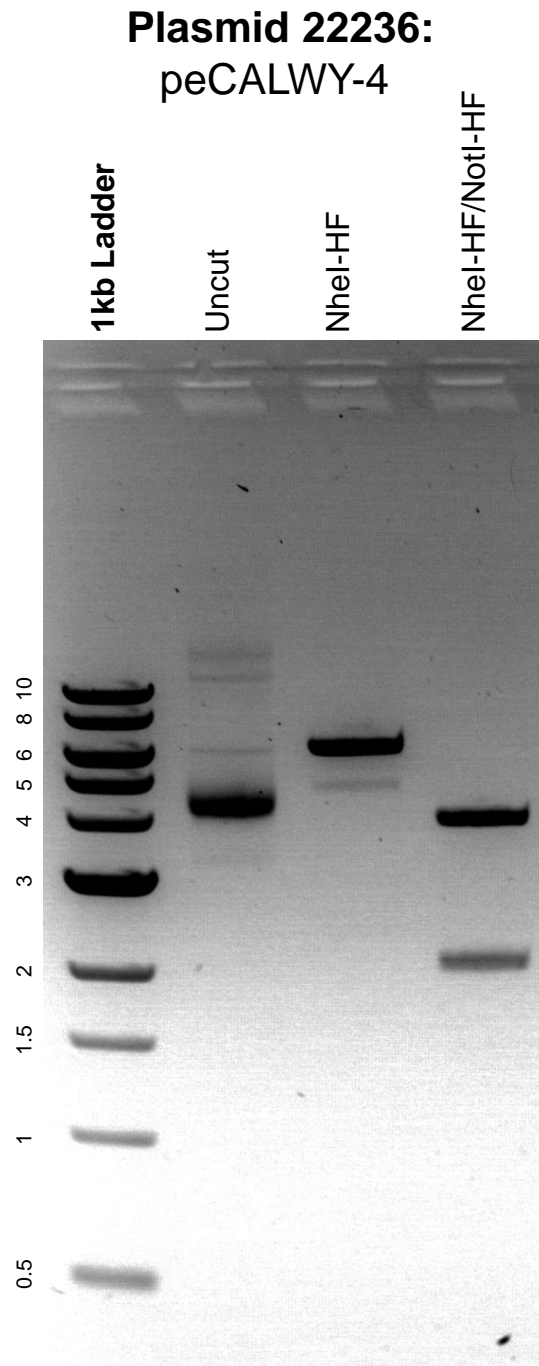


This gel depicts the NEB 1kb ladder and a digestion of the plasmid peCALWY-4 with the following enzymes: NheI-HF and NotI-HF.



DNA digested with NheI-HF single digest and NheI-HF/NotI-HF double digest for **2 hours.**

Gel: 0.8% agarose stained with 5 uL of ethidium bromide.

Ran for 2 hours at 80 volts.