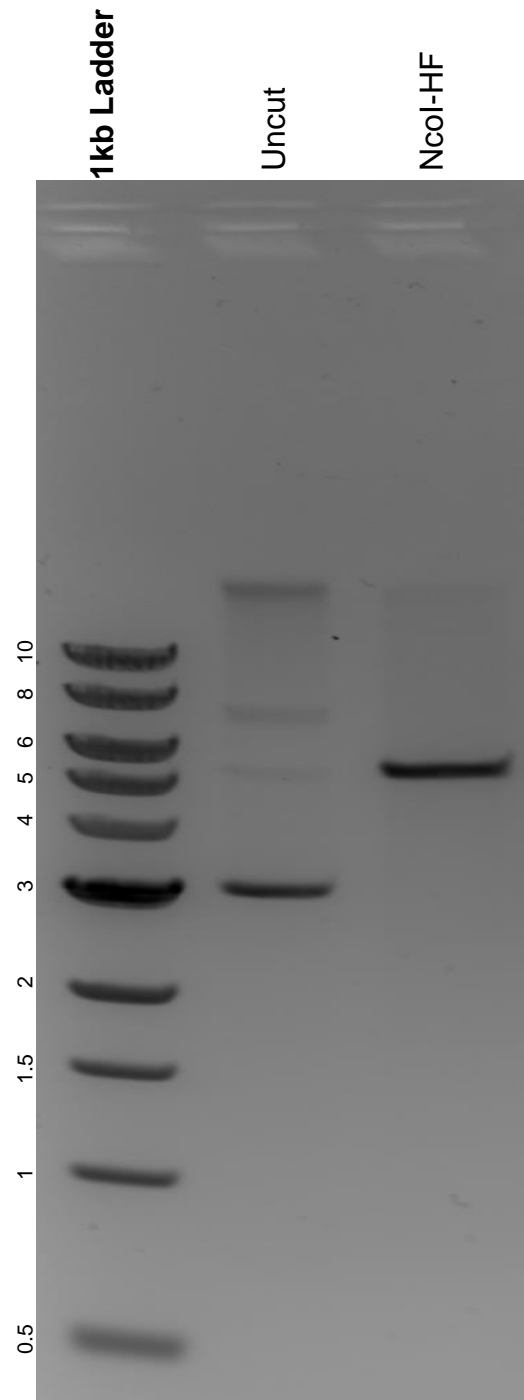


This gel depicts the NEB 1kb ladder and a digestion of the plasmid pMXs-DsRed Express with the following enzyme: NcoI-HF.

**Plasmid 22724:**  
pMXs-DsRed Express



DNA digested with NcoI-HF single digest for **2 hours**.  
Gel: 0.8% agarose stained with 5 uL of ethidium bromide.  
Ran for 2 hours at 100 volts.