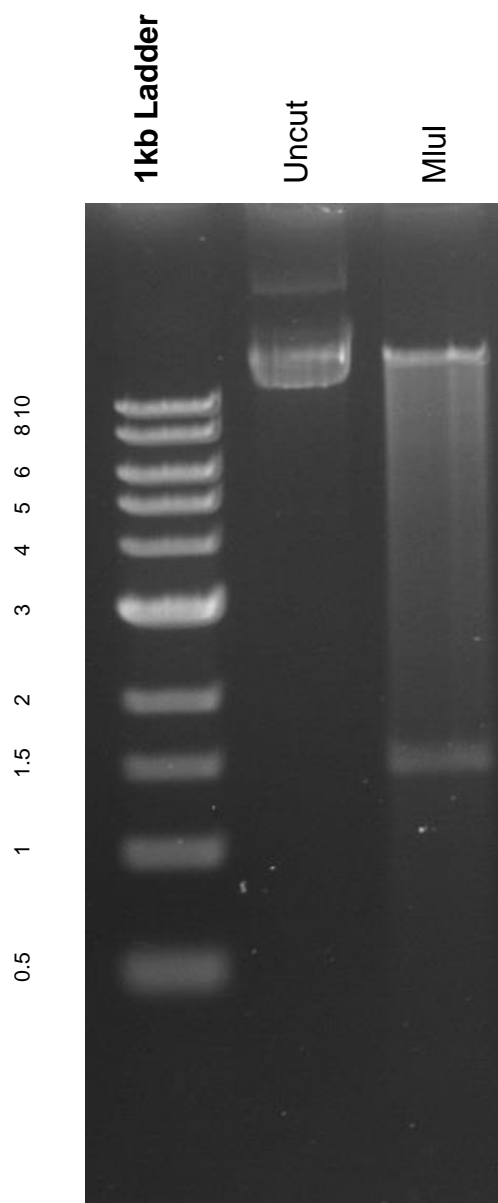


This gel depicts the NEB 1kb ladder and a digestion of the plasmid 22799 with the following enzymes: MluI

**Plasmid # 22799**  
**Ai9**



DNA digested with MluI single digest for **2 hours**

Gel: 0.8% TAE stained with 100 ml 1X TAE and 5uL of ethidium bromide

Ran for 2 hours at **47** volts