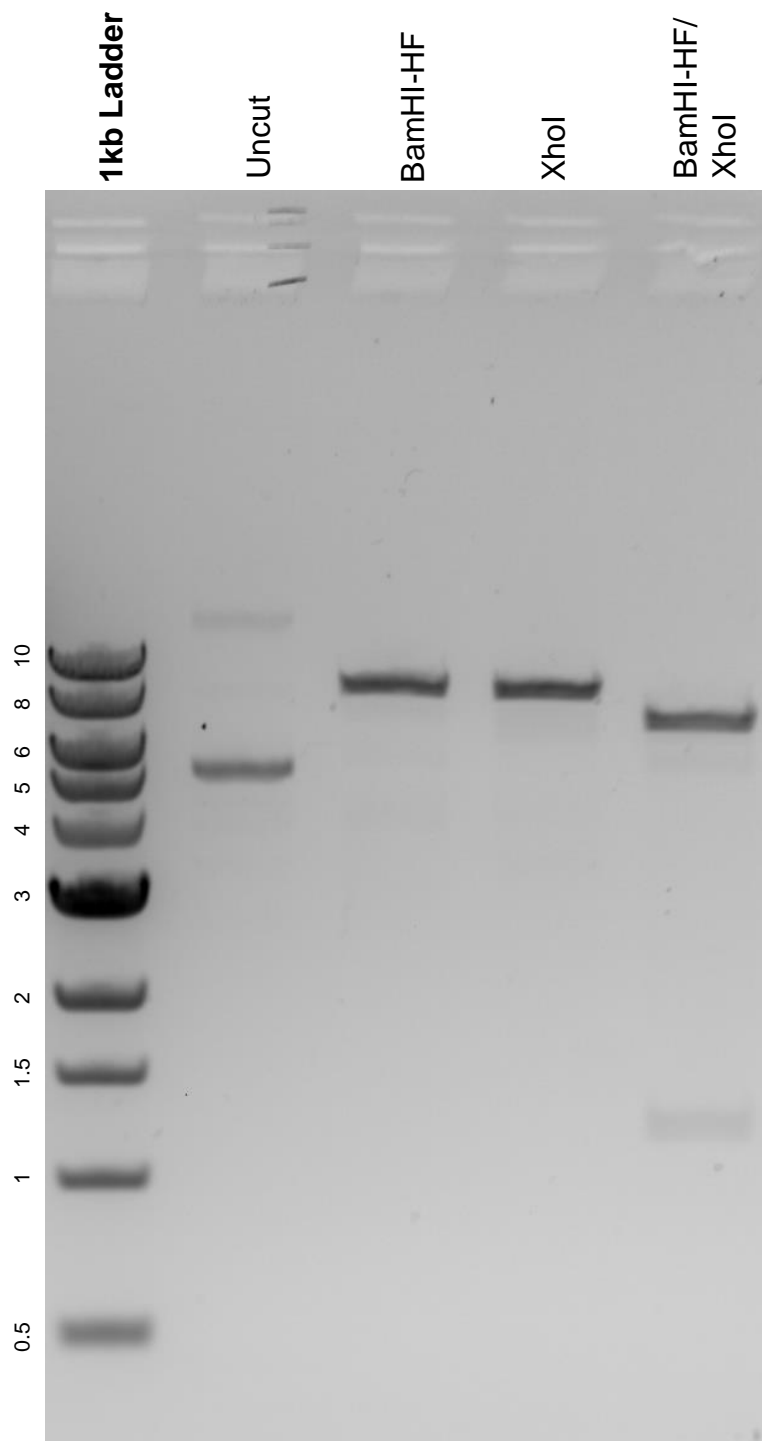


This gel depicts the NEB 1kb ladder and a digestion of the plasmid pLenti6/V5-p53_R273H with the following enzymes: BamHI-HF and XhoI.

Plasmid 22934:
pLenti6/V5-p53_R273H



DNA digested with BamHI-HF and XhoI single digests and BamHI-HF/XhoI double digest for **2 hours**.

Gel: 0.8% agarose stained with 5 uL of ethidium bromide.

Ran for 1.5 hours at 100 volts.