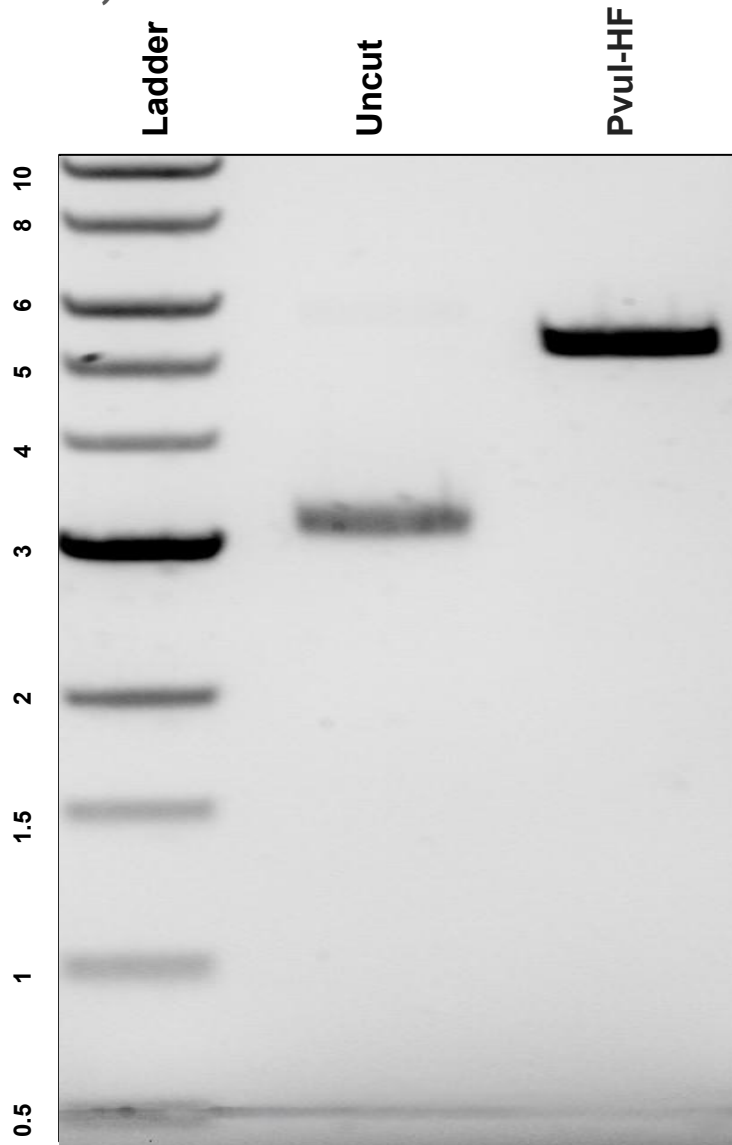


This gel depicts the NEB 1kb Ladder and a digestion of the plasmid **224488: pME-Luciferase-P2A-H2A-mCherry (JDW 926)** with the following enzyme(s): **PvuI-HF**

plasmid 224488:
pME-Luciferase-P2A-H2A-mCherry (JDW 926)



DNA was digested for 1 hour and run on a 0.8% agarose gel stained with SYBR Safe for 1 hour and 15 minutes (100 volts).