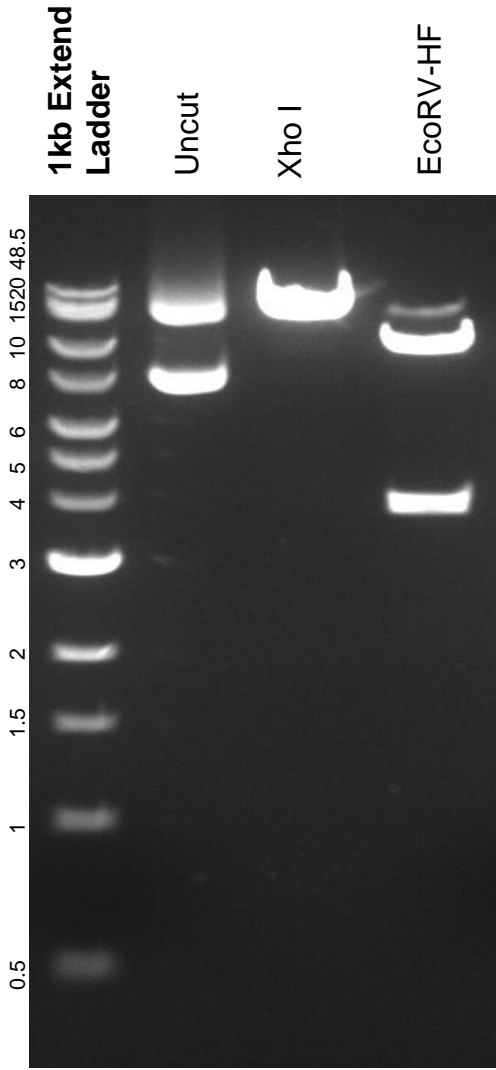


This gel depicts the NEB 1kb Extend Ladder and a digestion of the plasmid Sox17 GFP with the following enzymes: Xho I and EcoRV-HF

Plasmid 23334 Sox17 GFP



DNA digested with Xho I and EcoRV-HF a single digests for **2 hours**.
Gel: 0.8% agarose stained with 15 ul of SYBR Safe.
Ran for 1.5 hours at 100 volts.