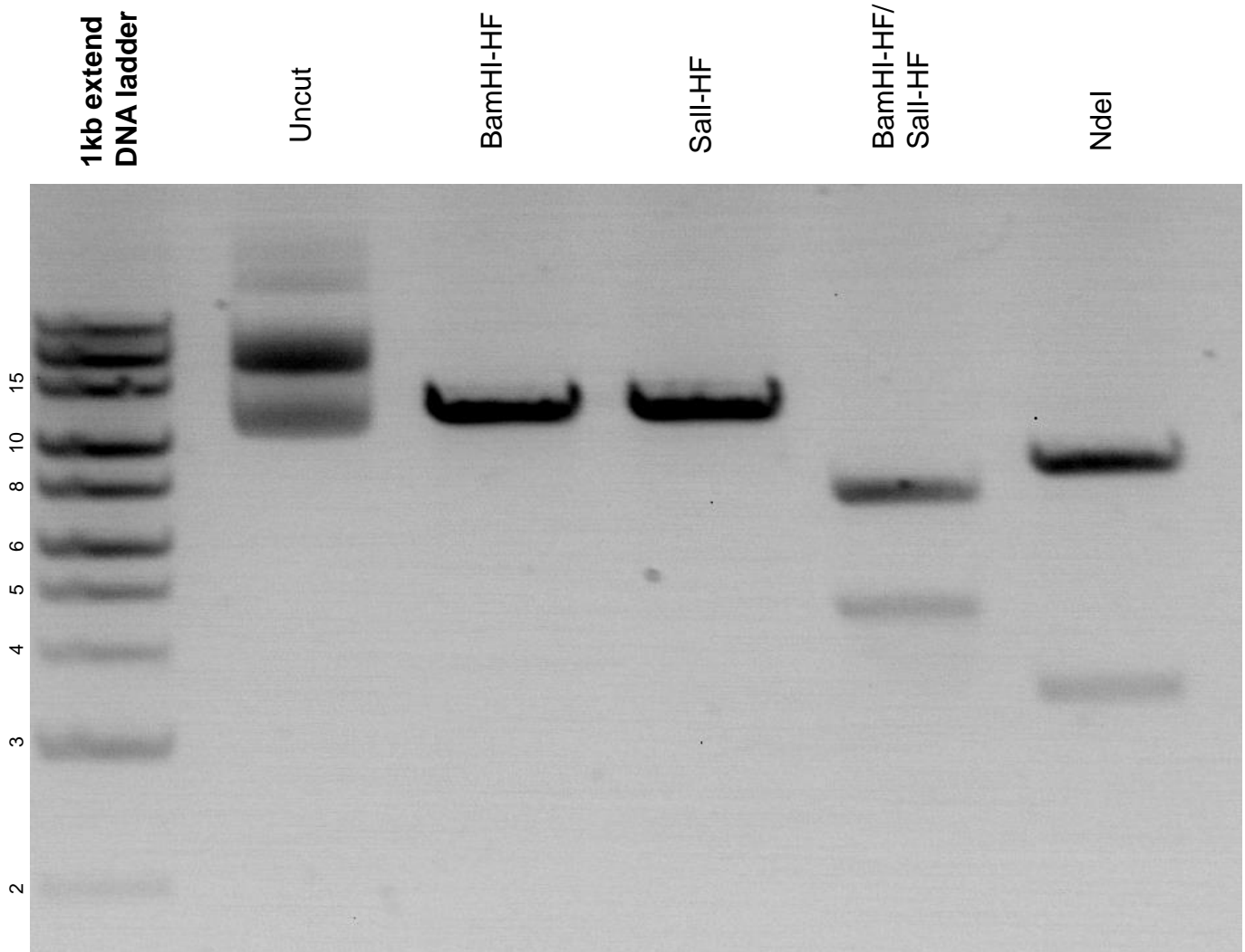


This gel depicts the NEB 1kb extend DNA ladder and a digestion of plasmid 25361 with BamHI-HF, Sall-HF, and NdeI.

Plasmid #: 25361
2XMyC-LRRK2-WT



DNA digested with BamHI-HF single digest, Sall-HF single digest, BamHI-HF / Sall-HF double digest, and NdeI single digest for **2 hours**. Gel: 0.8% agarose stained with ethidium bromide. Run for 2 hours at 80 volts.