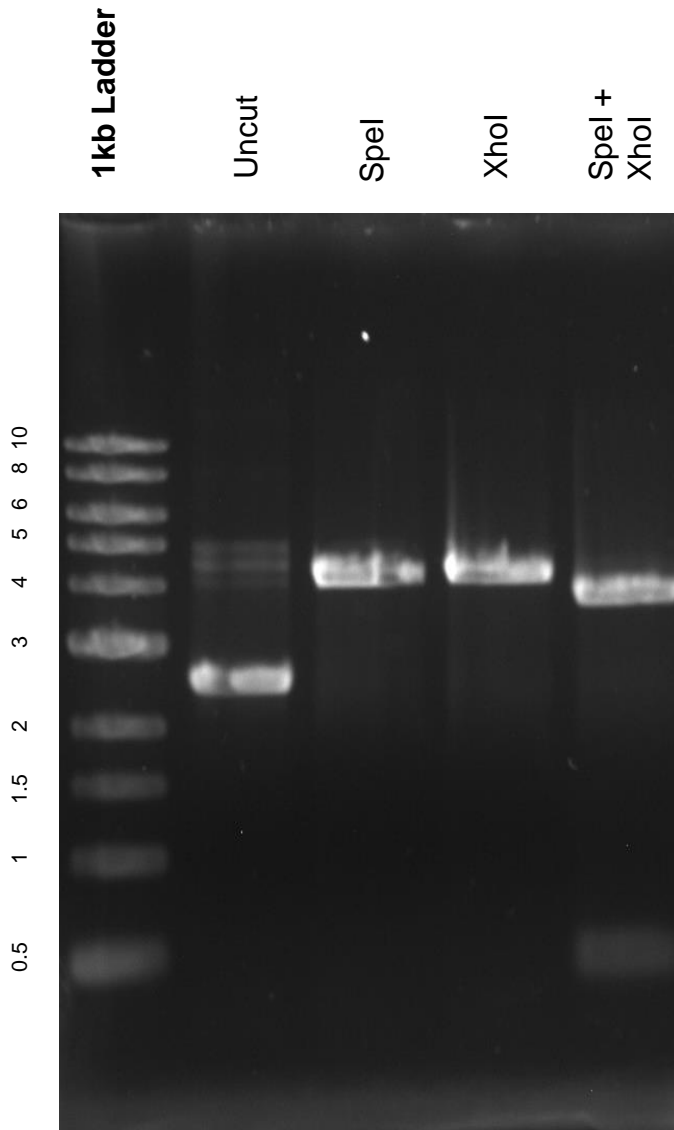


This gel depicts the NEB 1kb ladder and a digestion of the plasmid 25755 with the following enzymes: SpeI, XhoI, and XhoI + SpeI

25755
pEN_TTmcs



DNA digested with SpeI and XhoI single digest for **overnight**, and with SpeI + XhoI double digest **overnight**
Gel: 0.8% TAE stained with 100 ml 1X TAE and 5uL of ethidium bromide
Ran for 2 hours at **47** volts