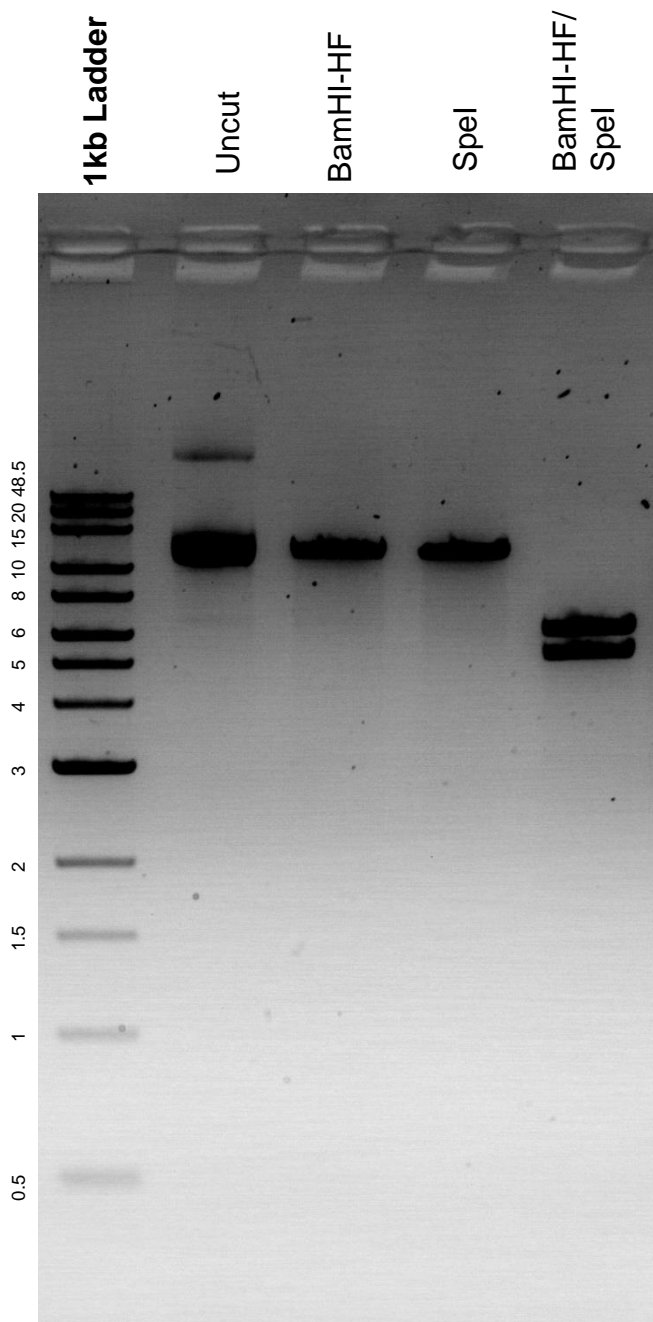


This gel depicts the NEB 1kb extend ladder and a digestion of the plasmid TU#867 (Punc-119sid-1) with the following enzymes: BamHI-HF and SpeI.

Plasmid 25811:
TU#867 (Punc-119sid-1)



DNA digested with BamHI-HF and SpeI single digests and BamHI-HF/SpeI double digest for **2 hours**.

Gel: 0.8% agarose stained with 5 uL of ethidium bromide.

Ran for 2 hours at 80 volts.