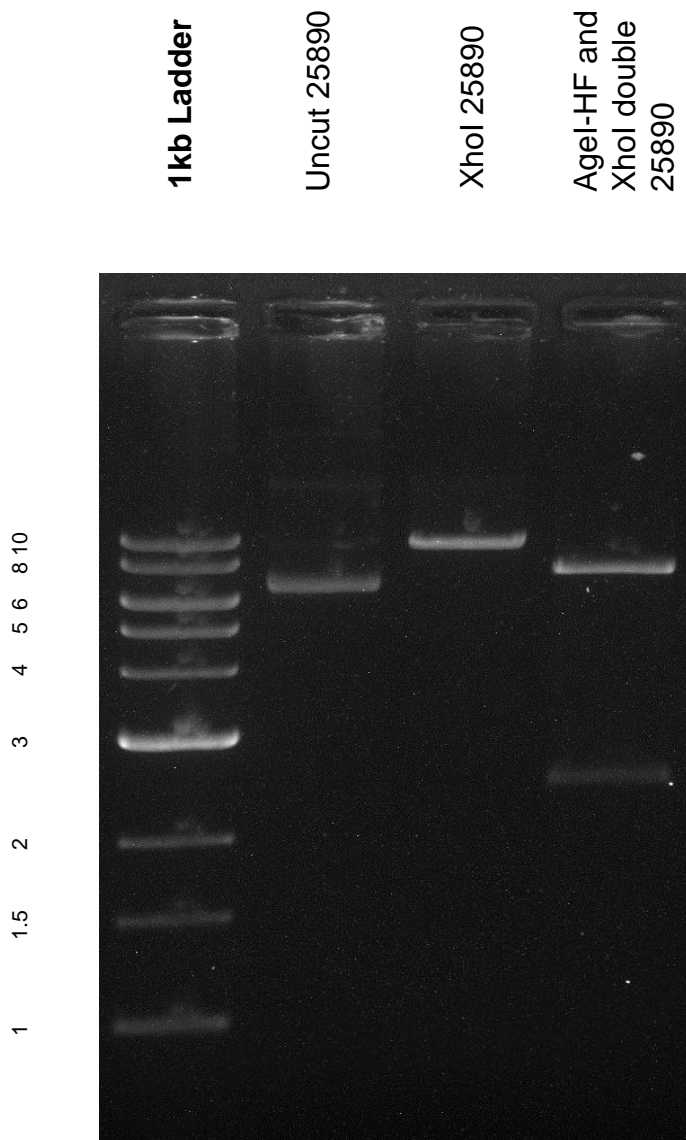


This gel depicts the NEB 1kb ladder and a digestion of the plasmid 25890 with the following enzymes: XhoI single digest and AgeI-HF and XhoI double digest

**Plasmid 25890  
pLX304**



DNA digested with XhoI single digest and AgeI-HF and XhoI double digest  
**2 hours**  
Gel: 0.8% TAE containing 3uL of ethidium bromide  
Ran for 3 hours at **47** volts