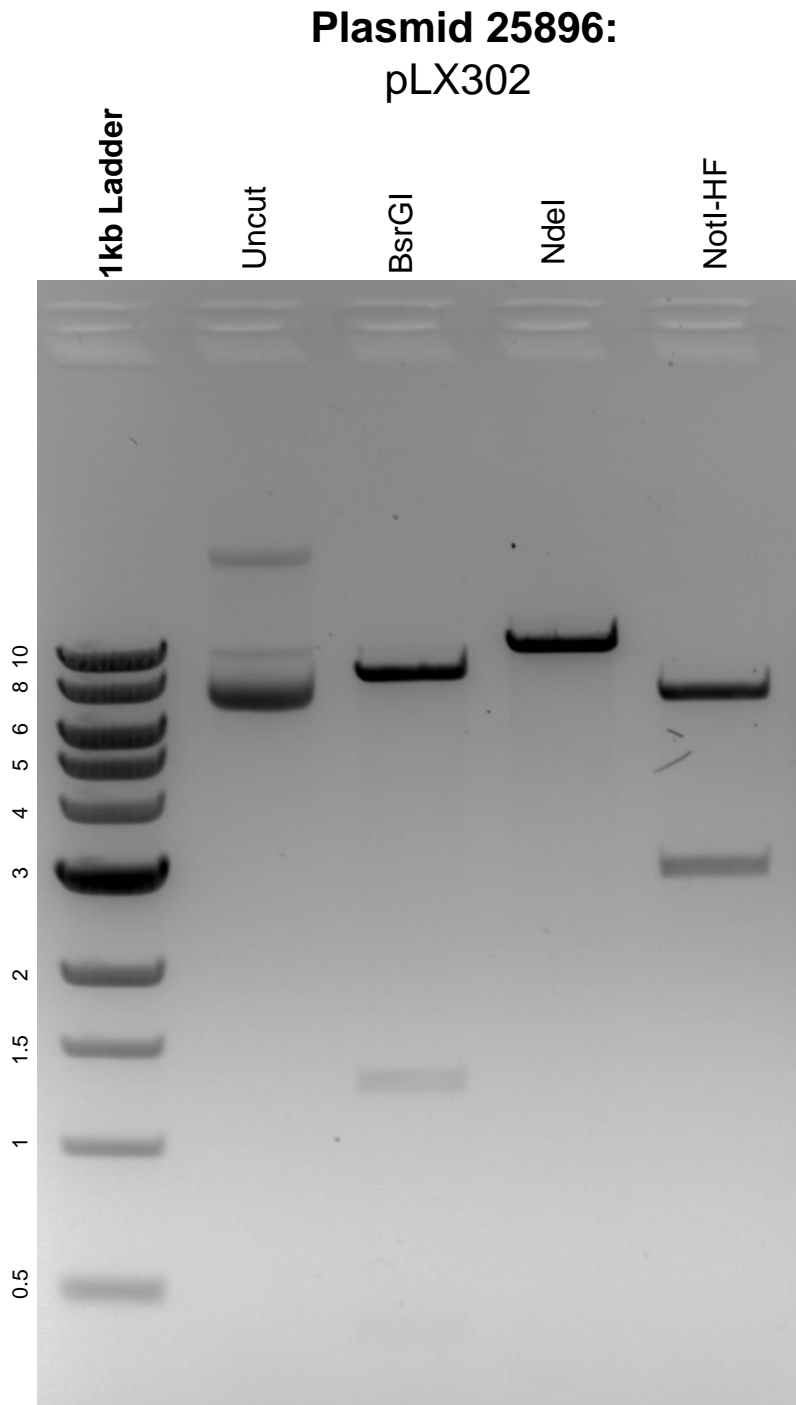


This gel depicts the NEB 1kb ladder and a digestion of the plasmid pLX302 with the following enzymes: BsrGI, NdeI, and NotI-HF.



DNA digested with BsrGI, NdeI, and NotI-HF single digests for **2 hours**.
Gel: 0.8% agarose stained with 5 uL of ethidium bromide.
Ran for 2 hours at 80 volts.