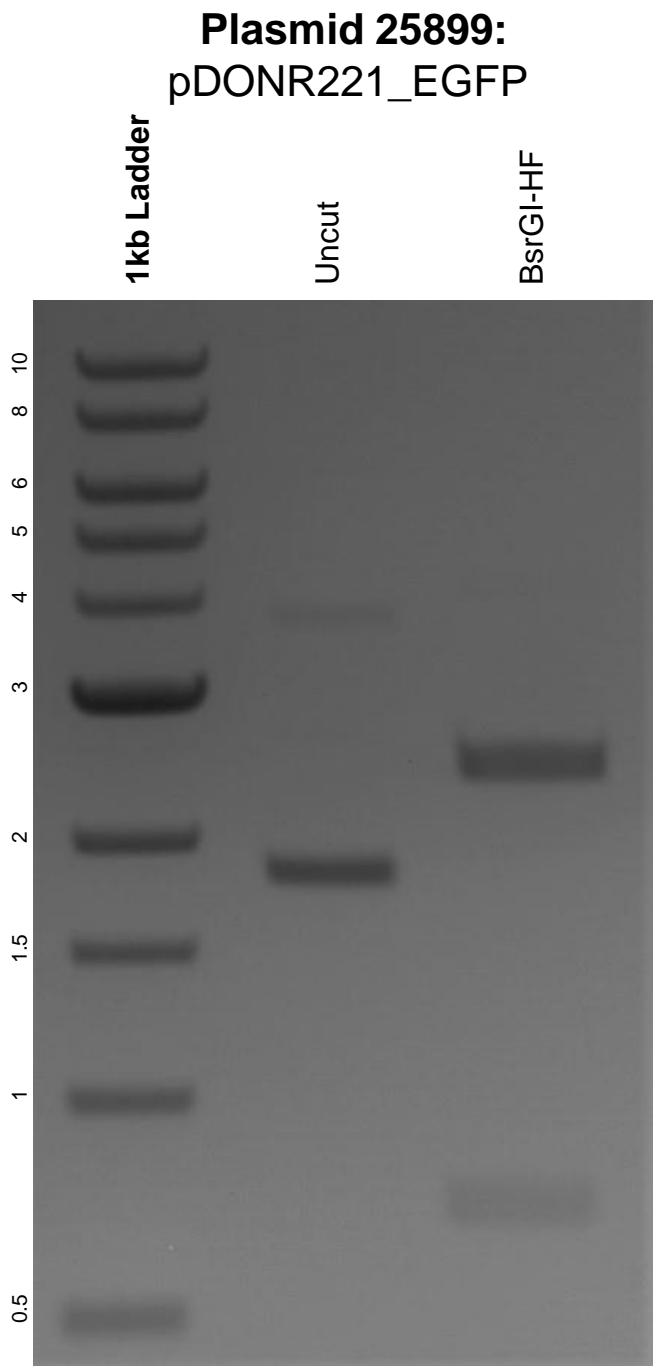


This gel depicts the NEB 1kb ladder and a digestion of the plasmid pDONR221_EGFP with the following enzymes: BsrGI-HF.



DNA digested with BsrGI-HF single digest for **2 hours**.
Gel: 0.8% agarose stained with 6 uL of ethidium bromide.
Ran for 1.5 hours at 100 volts.