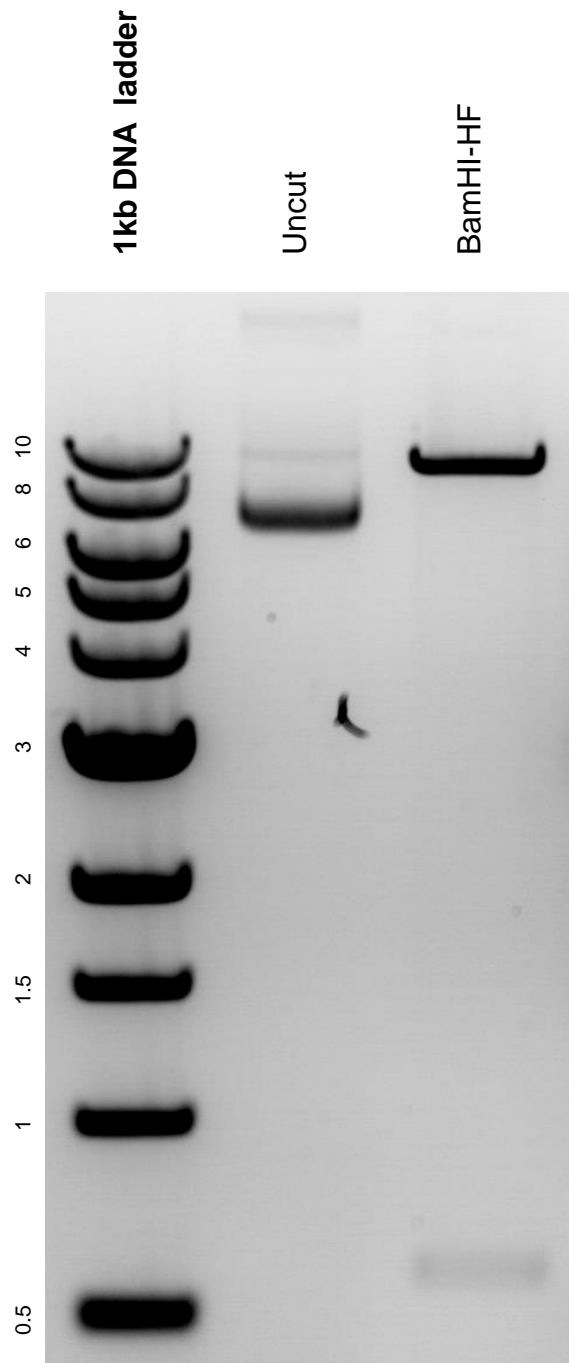


This gel depicts the NEB 1kb DNA ladder and a digestion of plasmid #26292 with the enzyme BamHI-HF

Plasmid #: 26292



DNA digested with BamHI-HF single digest for **2.5 hours**. Gel: 0.8% agarose stained with 8 uL of ethidium bromide. Ran for 2.5 hours at 80 volts.