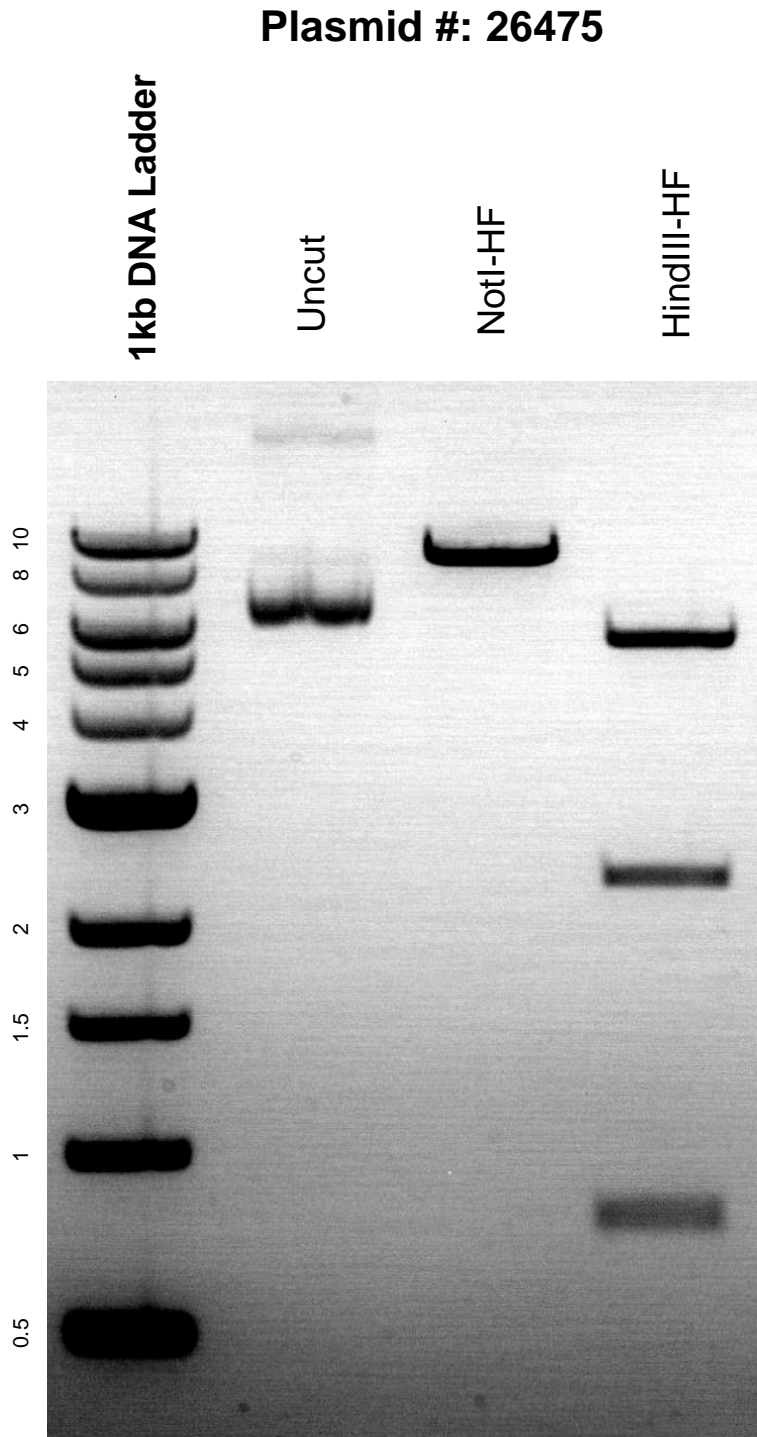


This gel depicts the NEB 1kb DNA ladder and a digestion of plasmid # 26475 with the enzymes NotI-HF and HindIII-HF.



DNA digested with NotI-HF single digest and HindIII-HF single digest for **2 hours**. Gel: 0.8% agarose stained with 5 μ L of ethidium bromide. Ran for 2 hours at 80 volts.