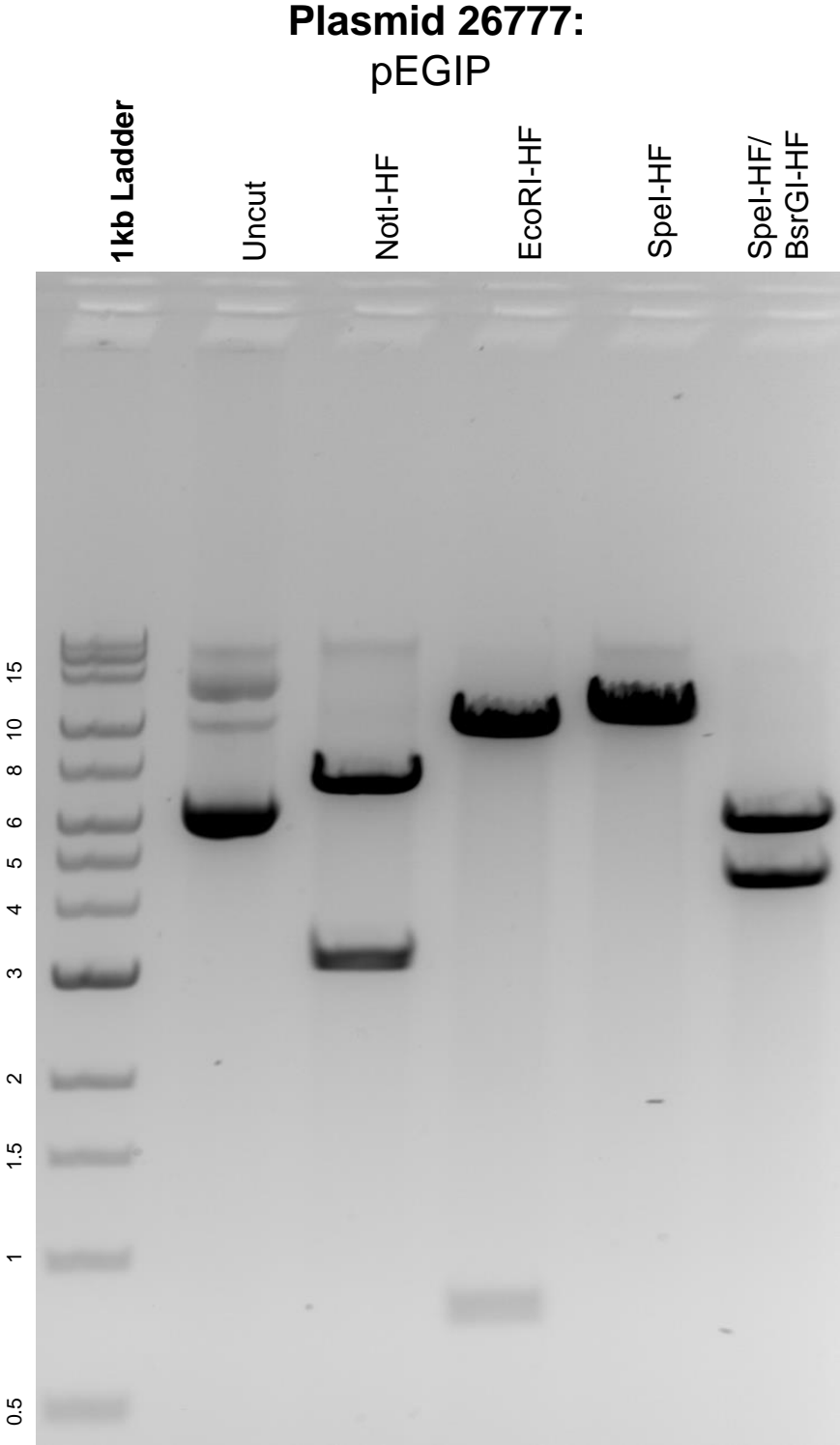


This gel depicts the NEB 1kb extend ladder and a digestion of the plasmid pEGIP with the following enzymes: NotI-HF, EcoRI-HF, SpeI-HF, and BsrGI-HF.



DNA digested with NotI-HF, EcoRI-HF, and SpeI-HF single digests and SpeI-HF/BsrGI-HF double digest for **2 hours**.
Gel: 0.8% agarose stained with 6 uL of ethidium bromide.
Ran for 1.5 hours at 100 volts.