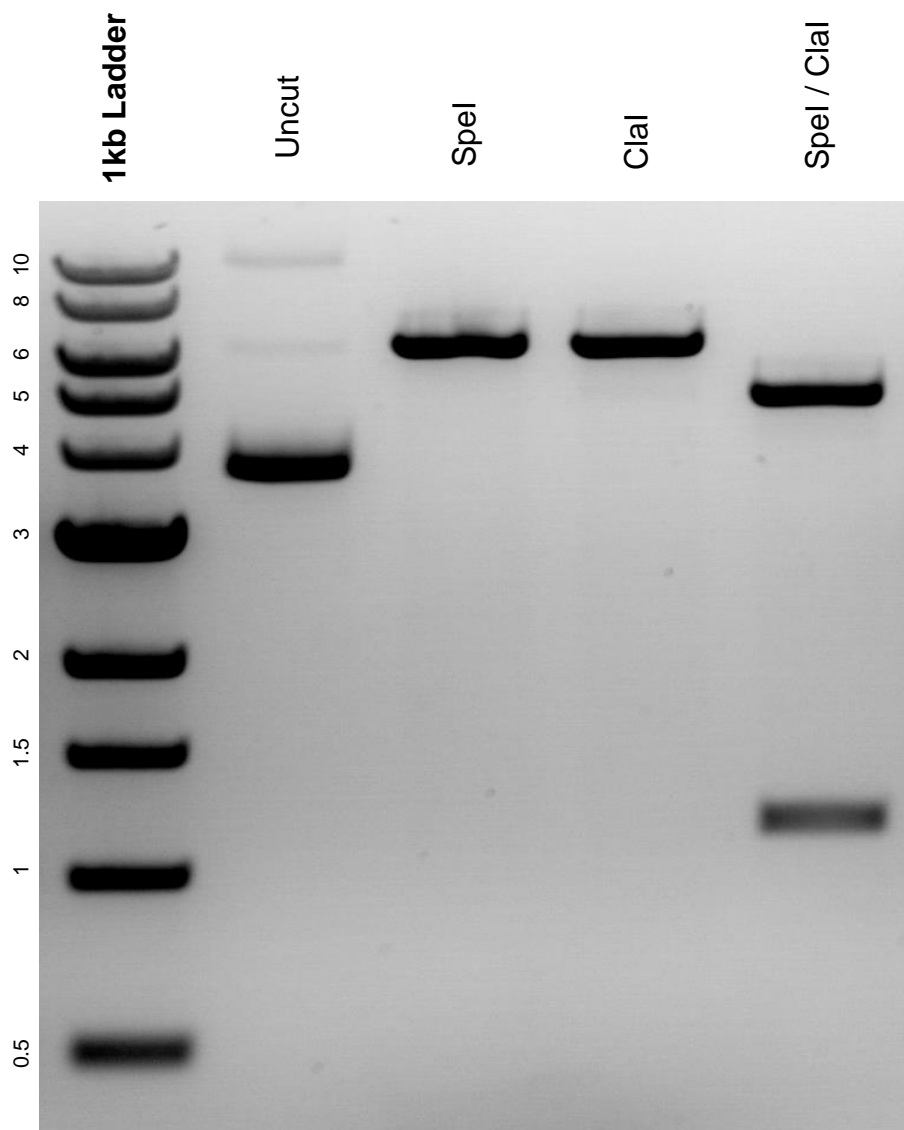


This gel depicts the NEB 1kb DNA ladder and a digestion of the plasmid 27121 with *SpeI* and *ClaI*.

Plasmid #: 27121
pMS2-GFP



DNA digested with *SpeI* single digest, *ClaI* single digest, and *SpeI* / *ClaI* double digest for **2.5 hours**. Gel: 0.8% agarose stained with 8 uL of ethidium bromide. Run for 2.5 hours at 80 volts.