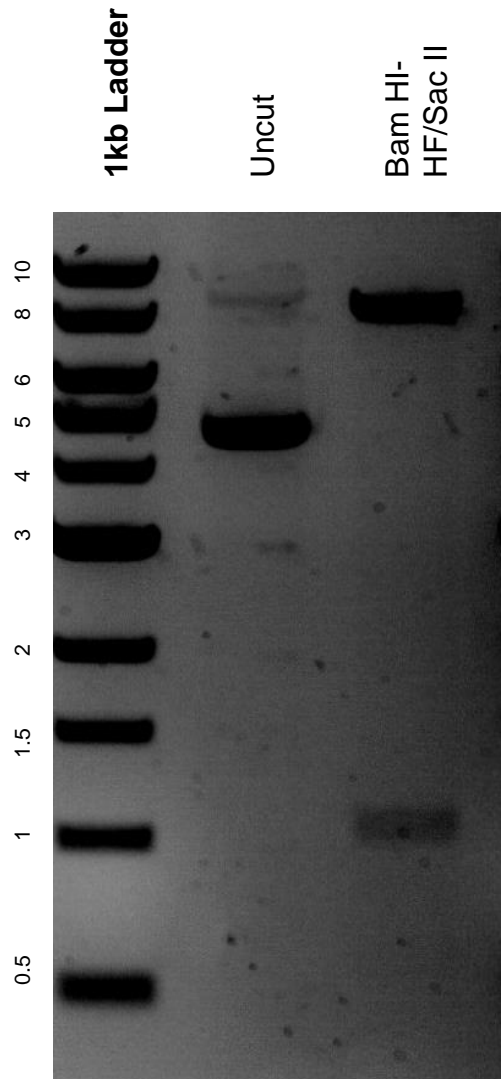


This gel depicts the NEB 1kb ladder and a digestion of the plasmid pTRKH3-ermGFP_ with the following enzymes: Bam HI-HF and Sac II

Plasmid 27169
pTRKH3-ermGFP



DNA digested with double digest Bam HI-HF and SacII for **2 hours**.
Gel: 0.8% agarose stained with 5 uL of ethidium bromide.
Ran for 1.5 hours at 100 volts.