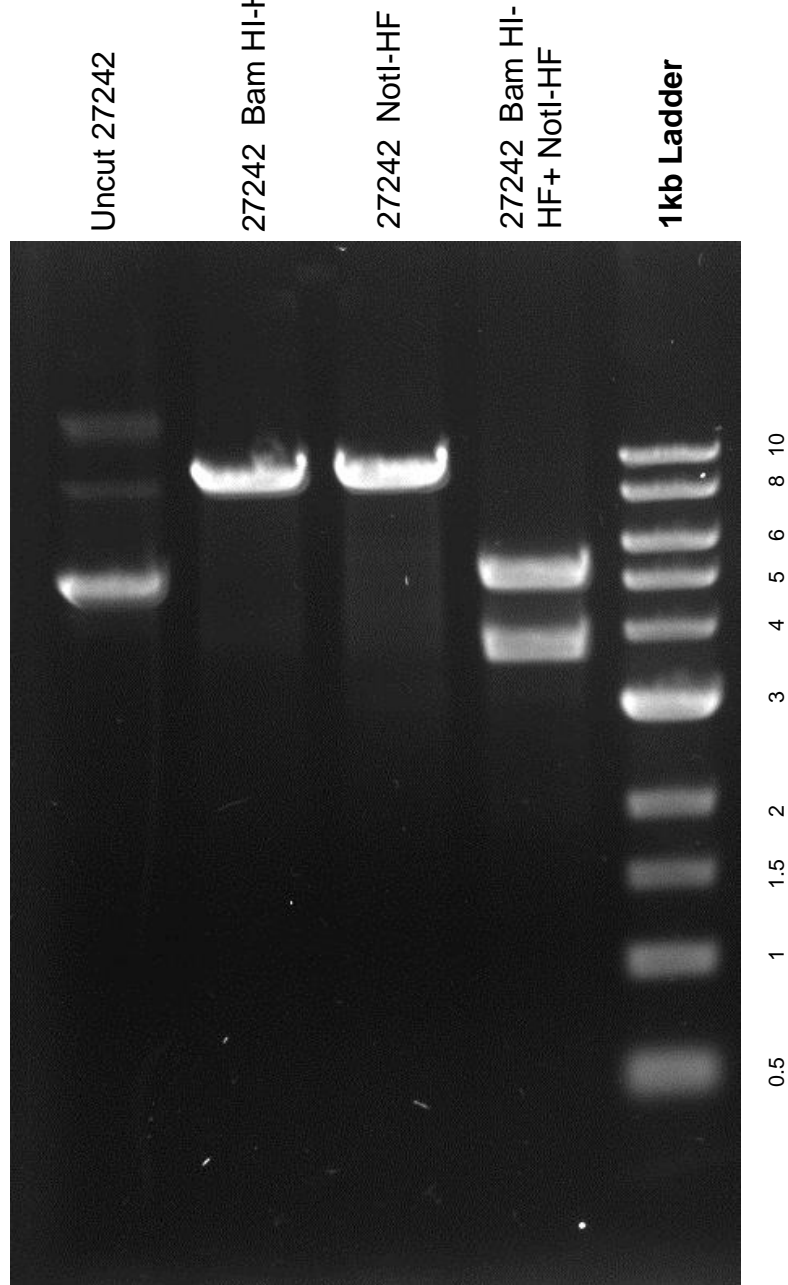


This gel depicts the NEB 1kb ladder and a digestion of the plasmid 27242 with the following enzymes: BamHI-HF single digest, NotI-HF single digest, and BamHI-HF +NotI-Hf double digest

Plasmid 27242

LRP6-pCS2



DNA digested with BamHI-HF single digest, NotI-HF single digest, and BamHI-HF + NotI-HF double digest for **1.5 hours**

Gel: 0.8% TAE stained with 100 ml 1X TAE and 5uL of ethidium bromide

Ran for 2 hours at **47** volts