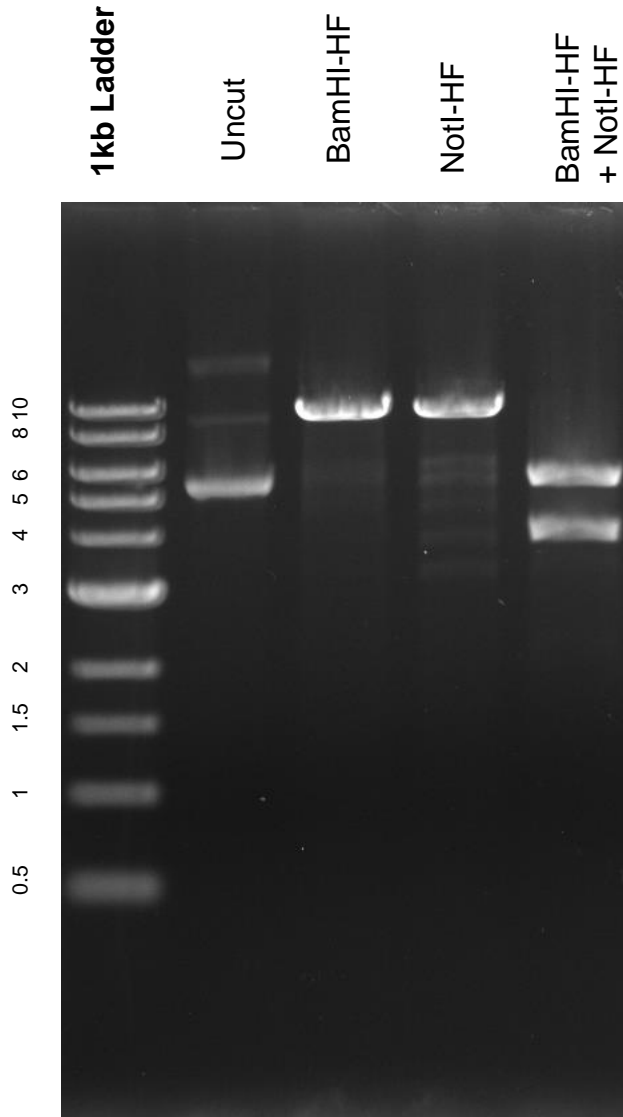


This gel depicts the NEB 1kb ladder and a digestion of the plasmid 27282 with the following enzymes: BamHI-HF, NotI-HF, and BamHI-HF + NotI-HF

27282
LRP6-pCS2-VSVG



DNA digested with BamHI-HF and NotI-HF single digest, and BamHI-HF + NotI-HF double digest for **2.5 hours**
Gel: 0.8% TAE stained with 100 ml 1X TAE and 5uL of ethidium bromide
Ran for 2 hours at **47 volts**