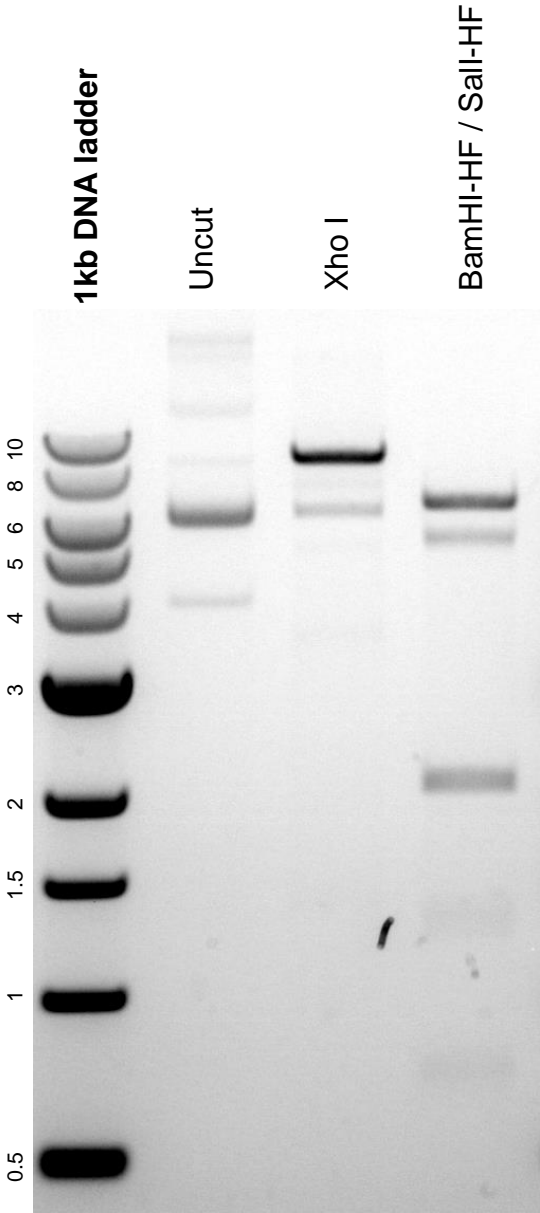


This gel depicts the NEB 1kb DNA ladder and a digestion of plasmid #27296 with the enzymes Xho I and BamHI-HF / Sall-HF.

**Plasmid #: 27296**



DNA digested with Xho I single digest and BamHI-HF / Sall-HF double digest for **2.5 hours**. Gel: 0.8% agarose stained with 5 uL of ethidium bromide. Ran for 2 hours at 80 volts.