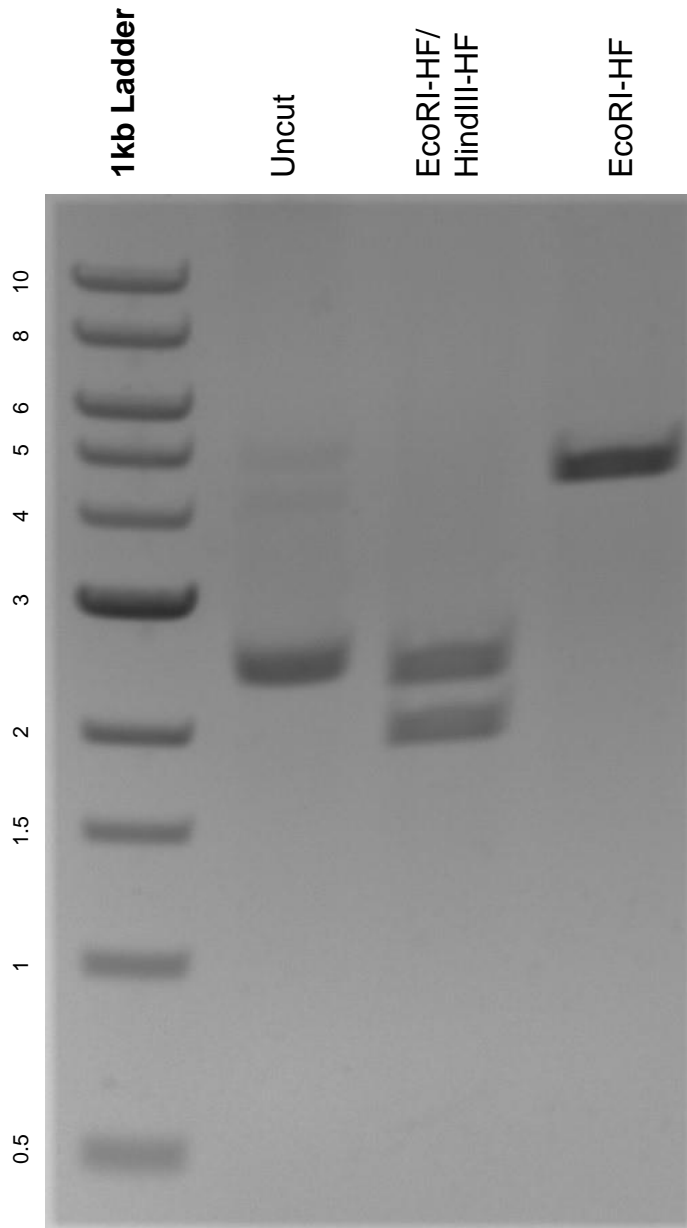


This gel depicts the NEB 1kb ladder and a digestion of the plasmid pBB541 with the following enzymes: EcoRI-HF and HindIII-HF.

Plasmid 27394:
pBB541



DNA digested with EcoRI-HF single digest and EcoRI-HF/ HindIII-HF double digest for **2 hours.**

Gel: 0.8% agarose stained with 5 uL of ethidium bromide.

Ran for 1.5 hours at 100 volts.