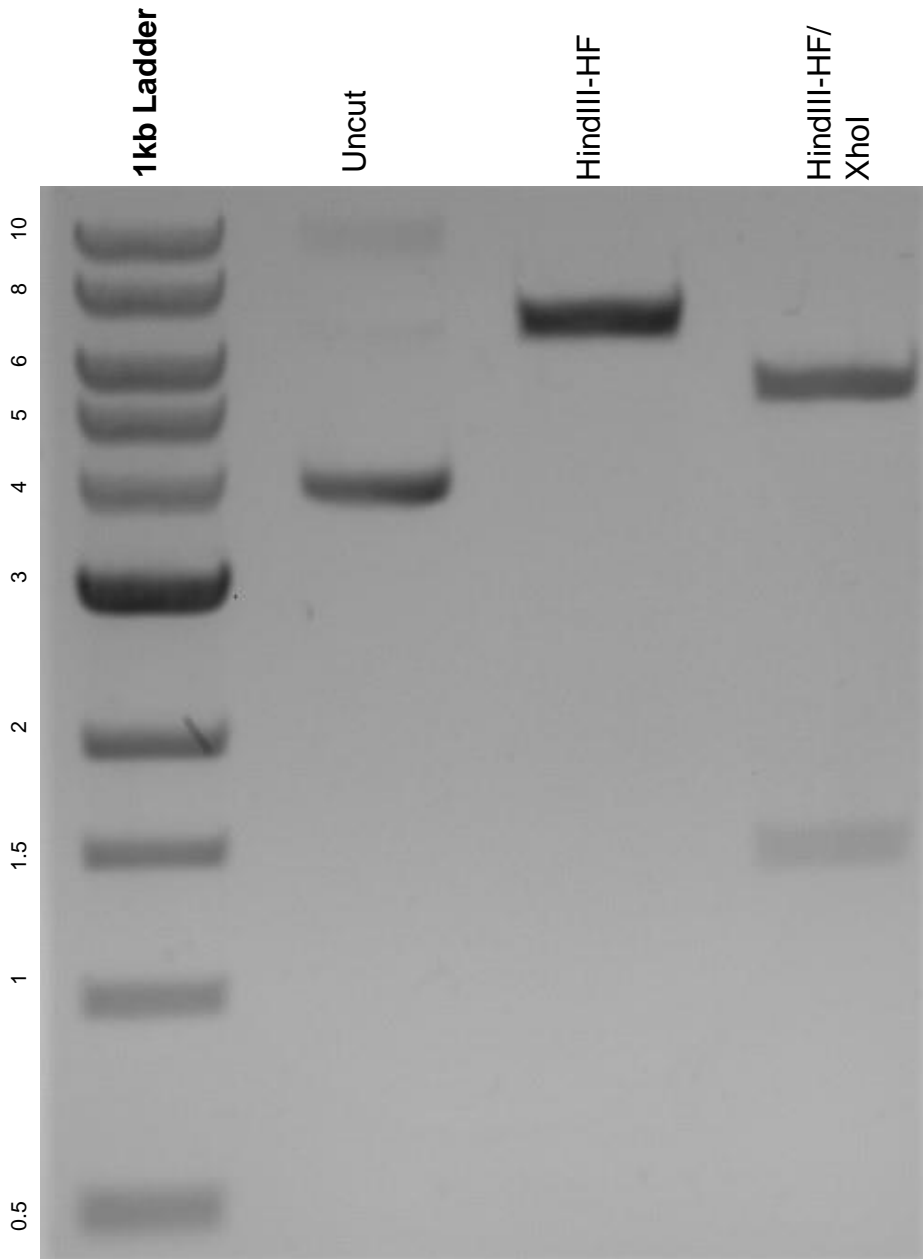


This gel depicts the NEB 1kb ladder and a digestion of the plasmid FLAG-Ets2 with the following enzymes: HindIII-HF and XhoI.

**Plasmid 28128:
FLAG-Ets2**



DNA digested with HindIII-HF single digest and HindIII-HF/ XhoI double digest for **2 hours**.

Gel: 0.8% agarose stained with 6 uL of ethidium bromide.

Ran for 1.5 hours at 100 volts.