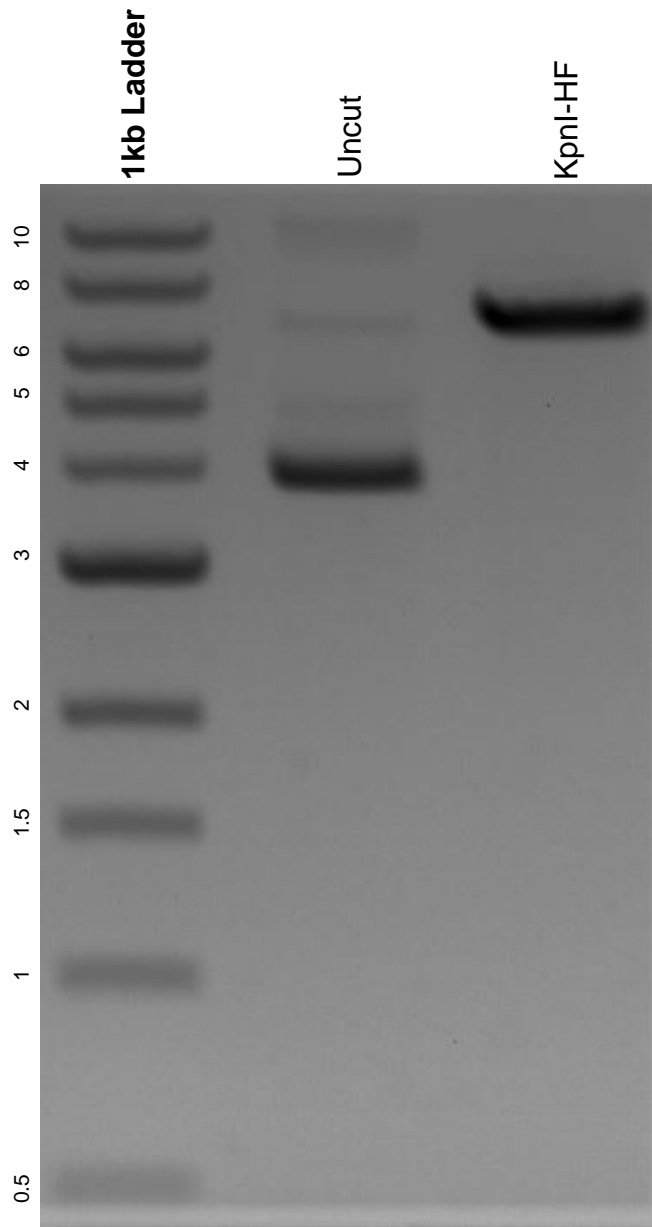


This gel depicts the NEB 1kb ladder and a digestion of the plasmid GFP-Nucleolin with the following enzymes: KpnI-HF.

### Plasmid 28176: GFP-Nucleolin



DNA digested with KpnI-HF single digest for **2 hours**.  
Gel: 0.8% agarose stained with 6 uL of ethidium bromide.  
Ran for 1.5 hours at 100 volts.