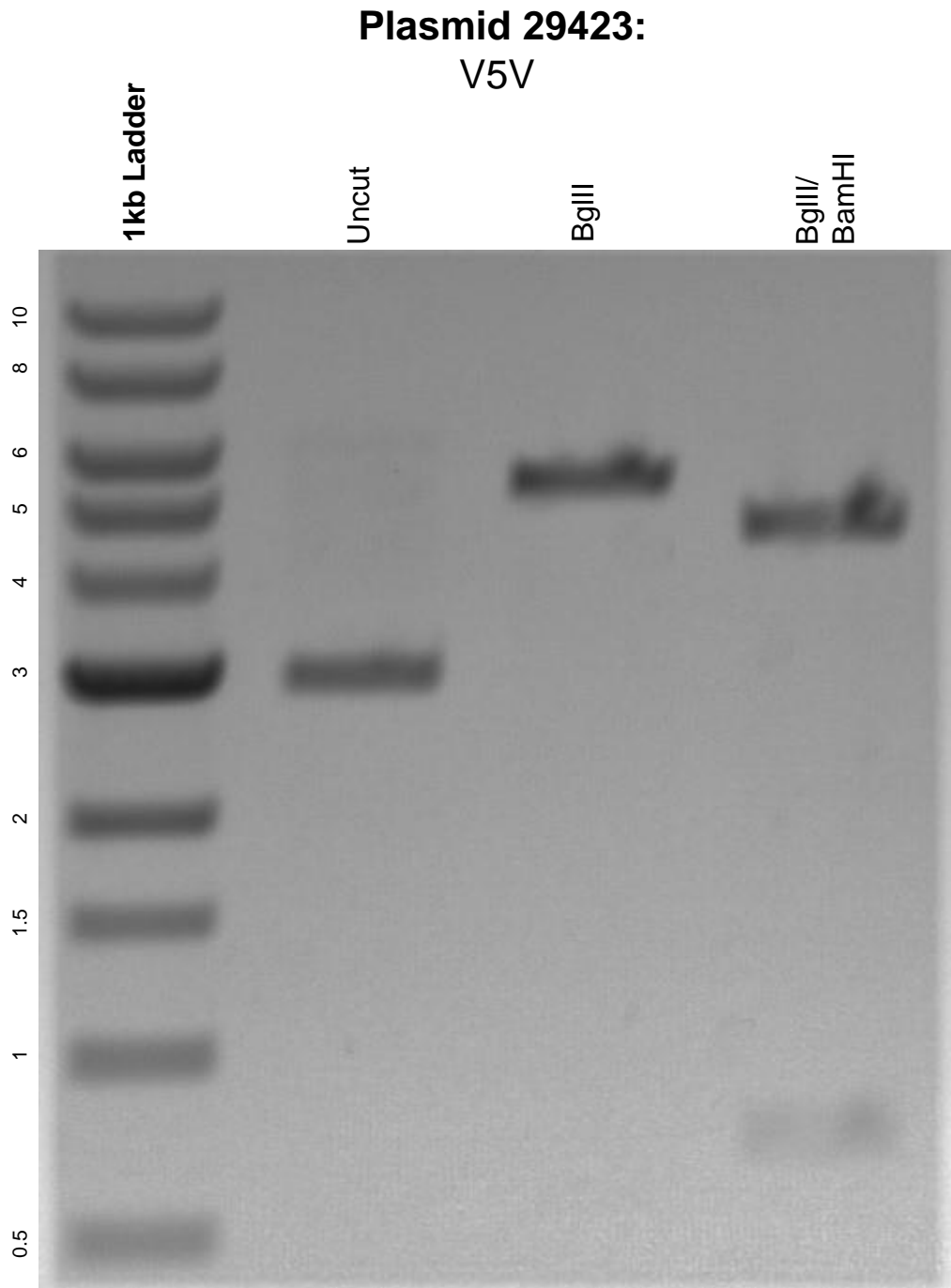


This gel depicts the NEB 1kb ladder and a digestion of the plasmid V5V with the following enzymes: BglIII and BamHI.



DNA digested with BglIII single digest and BglIII/ BamHI double digest for **2 hours**.
Gel: 0.8% agarose stained with 6 uL of ethidium bromide.
Ran for 1.5 hours at 100 volts.