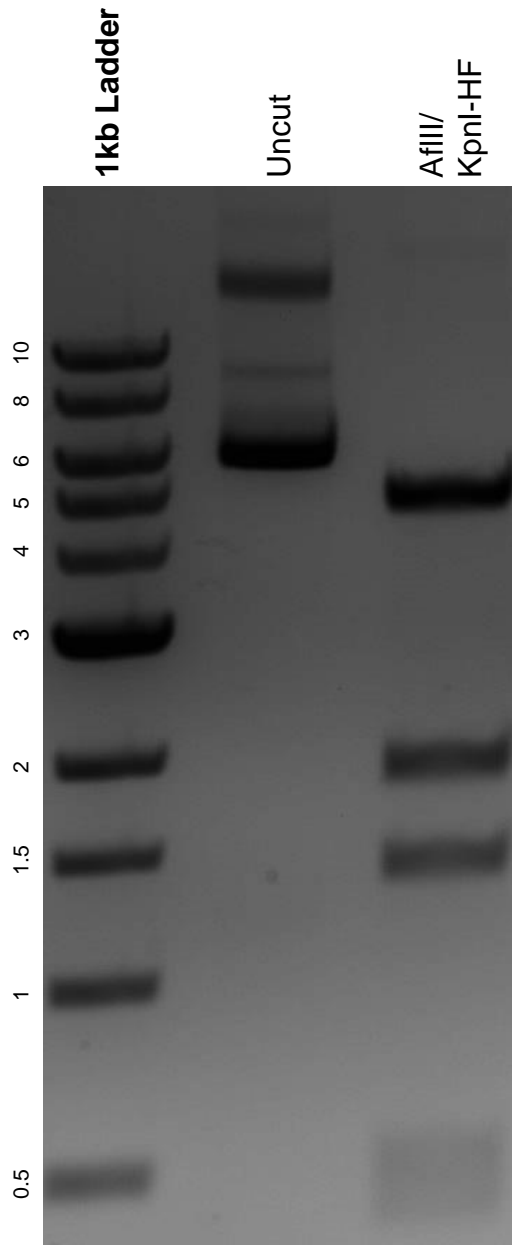


This gel depicts the NEB 1kb ladder and a digestion of the plasmid Tet-O-FUW-Neurod1 with the following enzymes: AflII and KpnI-HF.

**Plasmid 30129:**  
Tet-O-FUW-Neurod1



DNA digested with an AflII/KpnI-HF double digest for **2 hours**.  
Gel: 0.8% agarose stained with 5 uL of ethidium bromide.  
Ran for 1.5 hours at 100 volts.