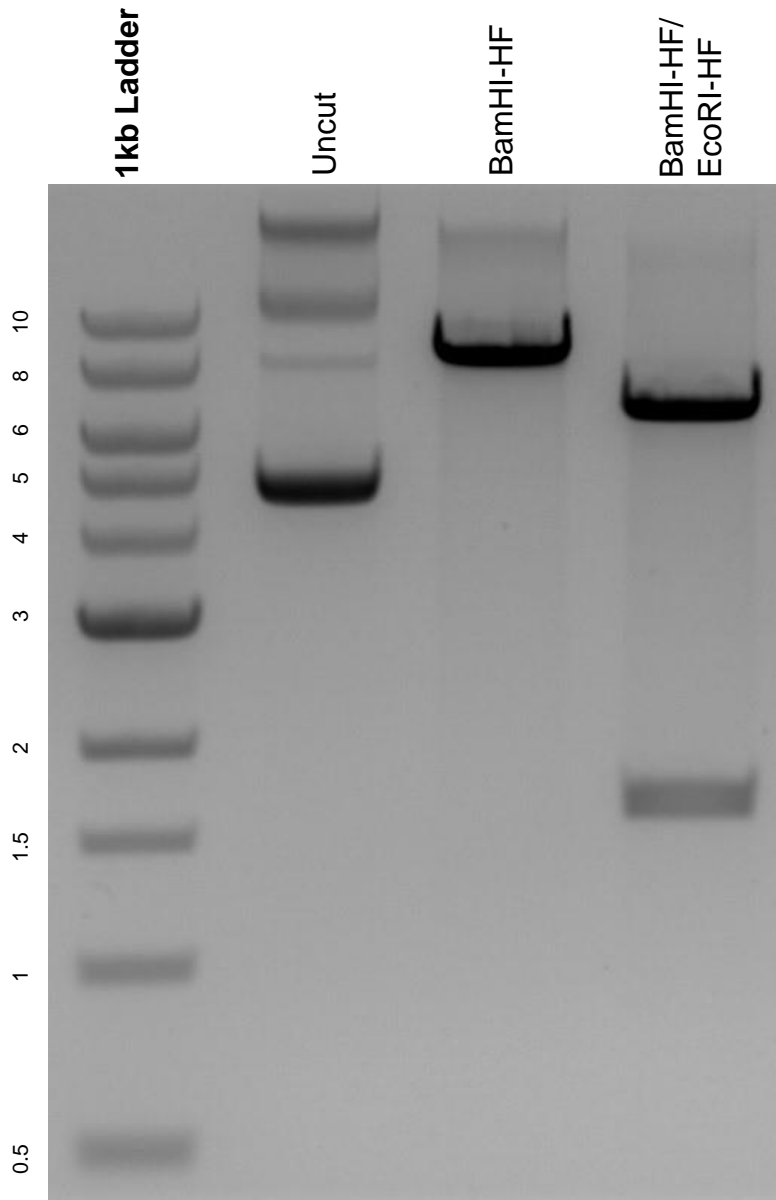


This gel depicts the NEB 1kb ladder and a digestion of the plasmid pRRL sEF1a HA.NLS.Sce(opt).T2A.IFP with the following enzymes: BamHI-HF and EcoRI-HF.

Plasmid 31484:
pRRL sEF1a HA.NLS.Sce(opt).T2A.IFP



DNA digested with BamHI-HF single digest and BamHI-HF/ EcoRI-HF double digest for **2 hours**.

Gel: 0.8% agarose stained with 6 uL of ethidium bromide.

Ran for 1.5 hours at 100 volts.